

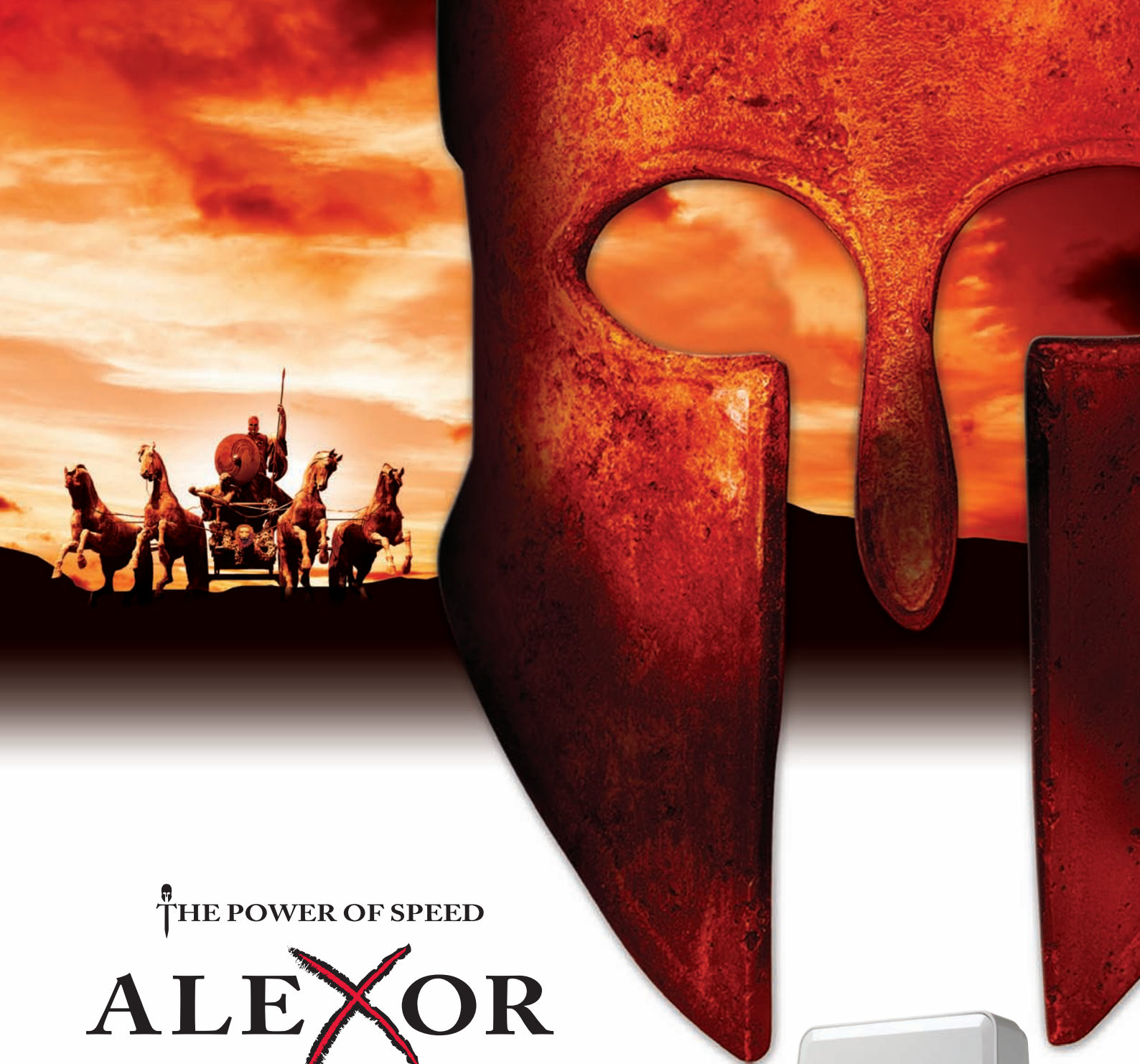
# DSC

*A Tyco International Company*



## EUROPE, MIDDLE EAST & AFRICA CATALOG 2011/2012

▼ [proceed to contents](#)



THE POWER OF SPEED

# ALEXOR

**\*EN50131 & \*\*PD6662  
COMPLIANT**

## The Great Protector is Here

DSC's ALEXOR 2-Way Wireless Security Panel, with integrated voice dialer, provides superior wireless protection via a full suite of complementary wireless devices. A brand within the Tyco Security Products portfolio, DSC intruder security products work when it matters most.

\*Complies with EN50131:2006 + A1:2009 IAS Grade 2, Class 2

\*\*Complies with PD6662:2010 Grade 2, Class 2, notification options: A, B, C, D

▼ [proceed to contents](#)



# DSC

*A Tyco International Company*

## Compatibility

DSC products are designed to work with existing or future products.

## Upgradeable

DSC products allow you to expand and enhance systems with no replacement necessary.

## Flexibility

DSC products allow you to build a system that works for you with over 1000 configurable items.

## Durability

DSC products are designed to work, last and withstand extreme situations.

## Reliability

DSC products go beyond industry-required testing to ensure reliability and product life.

## Quality

DSC is committed to Six Sigma's utilization of consistent and predictable processes to improve what the customer sees and feels.



### Europe, Middle East & Africa Edition



Click on any heading  
to access content.  
Hit 'esc' to exit full screen mode.



#### panels, keypads & modules

- 1 Wireless
- 2-9 PowerSeries
- 10 Integration
- 11 Audio Verification
- 12 Fire Panels
- 13-14 MAXSYS®

#### sensors & accessories

- 16-19 433 & 868 MHz Wireless
- 20-21 Addressable
- 22-23 Motion Detectors
- 24-27 LC Series
- 28 Glassbreak Detectors
- 29 Smoke Detectors

#### communications

- 31-34 Transmitters
- 36-37 Sur-Gard®

#### software solutions & services

- 38-39 Software Solutions
- 40 Services & Support

#### access control

- 41 webEntry™



panels, keypads & modules



Now Available  
**INTEGRATED  
VOICE DIALER!**

### PC9155 ALEXOR 2-Way Wireless Panel

- 32 wireless zones, 16 wireless keys (without using a zone slot)
- Template programming
- 16 user codes, 1 master code and 1 maintenance code
- Account code error checking (patent pending)
- Alternate communications via GPRS and IP
- Onboard siren at 85dB
- 2 Input/Output terminals
- 200mA Aux Output
- 500 event buffer
- Wall and case tamper
- 24Hr Battery backup
- Powered by internal or external transformer
- Available in 433 MHz and 868 MHz
- SMS Command and Control with confirmation
  - Allows for arming, disarming, bypassing, etc.
- Independent opening and closing door chime control
- Seamless quick enroll and placement testing
- Voice Dialer for ALEXOR
  - Integrated voice dialer
  - Voice dialer supports 16 languages
  - Voice library of 50 words, includes 16 custom recorded words and 1 site identity
  - 6 voice dial numbers for multiple path communication of events
  - Programmable call directions for voice calls
  - Remote access via the phone line to arm/disarm/bypass
  - Ability to switch from voice dial call to remote access

Approval Listings for Version 1.1 and higher: European CE Directives (EMC, R&TTE , LVD), FCC/IC, UL/U/LC, ICASA (South Africa)

Approval Listings for Version 1.2: SBSC (Sweden), F&G (Norway/868 MHz), F&P (Denmark), FFFS (Finland), NCP (Holland), INCERT (Belgium), PD6662 (UK), EN50131-1/-3/-4/-6 Grade 2, ENV Class II, ATS Class 2



### WT5500 2-Way Wireless Wire-Free Keypad

- 2x16 full message display
- Intuitive clock programming
- Multiple door chime
- Ambient light sensor
- Display and keypad backlighting
- Outdoor temperature display
- Wall and Deskstand\* mount
- † Proximity Tag PT4 Arm/Disarm (WT5500P only)
- Installer's programming
- Multi-Language support
- 5 programmable function keys
- 3 one-touch emergency keys
- Tamper switch
- Nominal battery life - 1 year
- Available in 433 MHz and 868 MHz
- Visual armed status during sleep mode

\* WT5500D or WT5500DMK

Approval Listings for Version 1.1 and higher: European CE Directives (EMC, R&TTE , LVD), FCC/IC, UL/U/LC, ICASA (South Africa)

Approval Listings for Version 1.2: SBSC (Sweden), F&G (Norway/868 MHz), F&P (Denmark), FFFS (Finland), NCP (Holland), INCERT (Belgium), PD6662 (UK), EN50131-1/-3/-4/-6 Grade 2, ENV Class II, ATS Class 2



### PowerSeries 9045 Self-Contained Wireless Alarm System

- Smallest footprint of any self-contained wireless alarm system currently available
- Aesthetically pleasing design
- Supports 32 wireless zones and 16 wireless keys (without using a zone slot)
- Large 2 x 16 display
- Full 32-character programmable labels
- Enlarged keypad buttons
- 5 programmable function keys
- Intuitive clock programming
- Input/Output terminals can be programmed to operate as zone inputs or programmable outputs
- Individual FAP keys
- Wireless quick enroll
- Template programming
- 17 user codes
- 128 event buffer
- 1 partition
- Available in 433 MHz and 868 MHz

Approval Listings: European CE Directives (EMC, R&TTE , LVD), FCC/IC, UL/U/LC

# PowerSeries

## PC585 PowerSeries Control Panel

- 4 on-board zones
- 32 wireless zones
- 2 PGM outputs
- Connect up to 8 supervised keypads with keypad zones
- 1 partition
- 128-event buffer
- 32 user codes

Approval Listings: European CE Directives (EMC, R&TTE , LVD), INCERT (Belgium), FCC/IC, CERT (Tunisia)



## PC1616 PowerSeries Control Panel

- 6 on-board zones
- Expandable to 16 hardwired zones
- Expandable to 32 wireless zones
- 2 PGM outputs: expandable to 14 (PC5204, PC5208)
- Template programming
- Connect up to 8 supervised keypads with keypad zones
- 2 partitions
- 500-event buffer
- 48 user codes

Approval Listings: European CE Directives (EMC, R&TTE , LVD), INCERT (Belgium), NCP (Holland), NFA2P Type 2 (France), IMQ (Italy) Livello 2, SBSC (Sweden) Larmklass 2, EN 50131-1/-3/-6 Grade 2, Class II Environmental, ICASA (South Africa), FCC/IC, UL/ULC, F&P Class 2 Grade 2 (Denmark), SVK Class 2 Grade 2 (Finland), FG Class 2 Grade 2 (Norway), ET A (Ethiopia)



## PC1832 PowerSeries Control Panel

- 8 on-board zones
- Expandable to 32 hardwired zones
- Expandable to 32 wireless zones
- 2 PGM outputs: expandable to 14 (PC5204, PC5208)
- Template programming
- Connect up to 8 supervised keypads with keypad zones
- 4 partitions
- 500-event buffer
- 72 user codes

Approval Listings: European CE Directives (EMC, R&TTE , LVD), INCERT (Belgium), NCP (Holland), NFA2P Type 2 (France), IMQ (Italy) Livello 2, SBSC (Sweden) Larmklass 2, EN 50131-1/-3/-6 Grade 2, Class II Environmental, ICASA (South Africa), FCC/IC, UL/ULC, F&P Class 2 Grade 2 (Denmark), SVK Class 2 Grade 2 (Finland), FG Class 2 Grade 2 (Norway), ET A (Ethiopia)



## PC1864 PowerSeries Control Panel

- 8 on-board zones
- Expandable to 64 hardwired zones
- Expandable to 32 wireless zones
- 4 PGM outputs: expandable to 14 (PC5204, PC5208)
- Template programming
- Connect up to 8 supervised keypads with keypad zones
- 8 partitions
- 500-event buffer
- 95 user codes

Approval Listings: European CE Directives (EMC, R&TTE , LVD), INCERT (Belgium), NCP (Holland), NFA2P Type 2 (France), IMQ (Italy) Livello 2, SBSC (Sweden) Larmklass 2, EN 50131-1/-3/-6 Grade 2, Class II Environmental, ICASA (South Africa), FCC/IC, UL/ULC, F&P Class 2 Grade 2 (Denmark), SVK Class 2 Grade 2 (Finland), FG Class 2 Grade 2 (Norway), ET A (Ethiopia)



**TL260GS (Internet and GPRS) Alarm Communicator and GS2060 GPRS Alarm Communicator.**  
 Both Integrated Communicators offer options for uploading/downloading over the Internet and are compatible with PC1616/PC1832/PC1864 PowerSeries control panels. (See page 32 for product details)



## Control Panel Overview | Feature Comparison Chart

Features	PC585	PC1616	PC1832	PC1864
Number Of On-board Zones	4	6	8	8
Total Zones Supported	32	32	32	64
Keypad Zone Expansion	Yes	Yes	Yes	Yes
Hardwired Zone Expansion	No	Yes	Yes	Yes
Hardwired Zones	-	16 (1 x PC5108)	32 (3 x PC5108)	64 (7 x PC5108)
Wireless Zone Expansion	Yes	Yes	Yes	Yes (32 Wireless)
Addressable Zone Expansion	No	Yes	Yes	Yes (32 Addressable)
Number of Keypads	8	8	8	8
Number of Wireless Receivers	4	4 (PC5320)	4 (PC5320)	4 (PC5320)
On-Board PGM Outputs	PGM 1 = 50 mA PGM 2 = 50mA	PGM 1 = 50 mA PGM 2 = 300mA	PGM 1 = 50 mA PGM 2 = 300mA	PGM 1, 3, 4 = 50 mA PGM 2 = 300mA
Number of Main Panel Low-Current PGM Outputs	2	1	1	3
Number of Main Panel High-Current PGM Outputs	-	1	1	1
PGM Expansion	-	8 x 50 mA (PC5208) 4 x 500 mA (PC5204)	8 x 50 mA (PC5208) 4 x 500 mA (PC5204)	8 x 50 mA (PC5208) 4 x 500 mA (PC5204)
Number of Additional Low-Current PGM Outputs	-	8	8	8
Number of Additional High-Current PGM Outputs	-	4	4	4
Number of Access Codes	32+ Master Code	47+ Master Code	71+ Master Code	94+ Master Code
Number of Partitions	1	2	4	8
Panel Event Buffer	128	500	500	500
Phone Line Supervision	Yes	Yes	Yes	Yes
Siren Supervision	Yes	Yes	Yes	Yes
Bell Output	12 V / 700 mA (cont)	12 V / 700 mA (cont)	12 V / 700 mA (cont)	12 V / 700 mA (cont)
SIA CP-01 Compliant	No	Yes	Yes	Yes
Event-Initiated Personal Paging	Yes	Yes	Yes	Yes
Upload/Download Support	Yes	Yes	Yes	Yes
Direct-Connect (PC Link) Downloading Support	Yes	Yes	Yes	Yes
DLS2002SA End-User Downloading Support	-	Yes	Yes	Yes
Internet Alarm Communications	No	Yes	Yes	Yes
Audio Alarm Verification	No	Yes	Yes	Yes
Cellular Alarm Communications	Yes	Yes	Yes	Yes
Battery Required	4 Ah / 7 Ah / 14 Ahr	4 Ah / 7 Ah / 14 Ahr	4 Ah / 7 Ah / 14 Ahr	4 Ah / 7 Ah / 14 Ahr



## Control Panel Overview | PowerSeries Module Version Compatibility Chart

Modules	PC585	PC1616	PC1832	PC1864
PC5100 Addressable Zone Expander	-	All	All	All
PC5108 8-Hardwire Zone Expander	-	All	All	All
RF5108-433 Wireless Receiver	All	All	All	All
RF5132-433 Wireless Receiver	All	All	All	All
PC5200/PC5204 Power Supply Modules	-	All	All	All
PC5208 Programmable Output Module	-	All	All	All
PC5320 Multiple Wireless Receiver Module	All	All	All	All
PC5400 Printer Interface Module	-	All	All	All
PC5601 Status Module	All	All	All	All
Escort 5580TC Telephone Interface & Automation Control Module	-	All	All	All
PK5590CL PowerSeries Touchscreen Interface Module	All	All	All	All
PK5500/RFK5500 64-Zone	All	All	All	All
PK5501/RFK5501 64-Zone LCD Picture ICON Keypad	All	All	All	All
PK5516/RFK5516 16-Zone LED Keypad	All	All	All	All
PK5508/RFK5508 8-Zone LED Keypad	All	All	All	All
LED5511Z 8-Zone LED Keypad	All	All	All	All
LCD5511 64-Zone ICON LCD Keypad	All	All	All	All
PC1555RKZ 8-Zone LED Keypad	All	All	All	All
T-Link TL150 Residential IP Alarm Communicator	All	All	All	All
T-Link TL250CE Internet Alarm Communicator	All	All	All	All
T-Link TL300CE Universal IP Alarm Communicator	All	All	All	All
GS3055-IGW GPRS Universal Cellular Alarm Communicator	All	All	All	All
GS2060 GPRS Cellular Alarm Communicator	-	All	All	All
TL260GS Internet and GMS/GPRS Dual-path Alarm Communicator	-	All	All	All
IT-100/IT-120 Integration Modules	All	All	All	All
PC5950 Audio Verification Module	All	All	All	All
PC5961 Stand-Alone Audio Station	All	All	All	All
PC5962 Contoured Audio Station	All	All	All	All
PC5964 Large Speaker Station	All	All	All	All



### PK5500 PowerSeries 64-Zone LCD Full-Message Keypad RFK5500 with built-in wireless receiver

- 8 language support
- Global partition status
- Full 32-character programmable labels
- Modern, slim-line landscape keypad
- Enlarged keypad buttons
- 5 programmable function keys
- Intuitive clock programming\*
- Input/Output terminal can be programmed to operate as a zone input, programmable output or as a low temperature sensor
- 3 one-touch emergency keys
- Multiple door chime per zone
- Adjustable backlight and keypad buzzer
- Wire channel
- Dual wall-mount and front cover tamper
- Easy-to-install mounting hinge
- Surface or single-gang box mount
- AC status ICON
- RFK5500-433 and NEW RFK5500-868 include all of the same features and supports 32 wireless zones and 16 wireless keys

Approval Listings: European CE Directives (EMC), INCERT (Belgium), NCP (Holland), NFA2P Type 2 (France), IMQ (Italy) Livello 2, SBSC (Sweden) Larmklass 2, EN 50131-1 Grade 2, Class II Environmental, FCC/IC, UL/ULC, F&P Grade 2 (Denmark), SVK Grade 2 (Finland), FG Grade 2 (Norway)

\* Feature only available with new PowerSeries control panels (PC1616, PC1832 and PC1864)



### PK5501 PowerSeries 64-Zone LCD Picture Icon Keypad RFK5501 with built-in wireless receiver

- Modern, slim-line landscape keypad
- Enlarged keypad buttons
- 5 programmable function keys
- Input/Output terminal can be programmed to operate as a zone input, programmable output or as a low temperature sensor
- 3 one-touch emergency keys
- Multiple door chime per zone
- Adjustable backlight and keypad buzzer
- Wire channel
- Dual wall-mount and front cover tamper
- Easy-to-install mounting hinge
- Surface or single-gang box mount
- AC status ICON
- RFK5501-433 and NEW RFK5501-868 include all of the same features and supports 32 wireless zones and 16 wireless keys

Approval Listings: European CE Directives (EMC), INCERT (Belgium), IMQ (Italy) Livello 2, SBSC (Sweden) Larmklass 2, EN 50131-1 Grade 2, Class II Environmental, FCC/IC, UL/ULC, F&P Grade 2 (Denmark), SVK Grade 2 (Finland), FG Grade 2 (Norway), NCP (Holland)



### PK5516 PowerSeries 16-Zone LED Keypad RFK5516 with built-in wireless receiver

- Modern, slim-line landscape keypad
- Enlarged keypad buttons
- 5 programmable function keys
- Input/Output terminal can be programmed to operate as a zone input, programmable output or as a low temperature sensor
- Individual FAP keys
- Multiple door chime per zone
- Adjustable backlight and keypad buzzer
- Wire channel
- Dual wall-mount and front cover tamper
- Easy-to-install mounting hinge
- Surface or single-gang box mount
- AC status ICON
- RFK5516 includes all of the same features and supports 32 wireless zones and 16 wireless keys

Approval Listings: European CE Directives (EMC), INCERT (Belgium), IMQ (Italy) Livello 2, SBSC (Sweden) Larmklass 2, EN 50131-1 Grade 2, Class II Environmental, FCC/IC, UL/ULC, F&P Grade 2 (Denmark), SVK Grade 2 (Finland), FG Grade 2 (Norway), NCP (Holland)

## PK5508 PowerSeries 8-Zone LED Keypad RFK5508 with built-in wireless receiver

- Modern, slim-line landscape keypad
- Enlarged keypad buttons
- 5 programmable function keys
- Input/Output terminal can be programmed to operate as a zone input, programmable output or as a low temperature sensor
- 3 one-touch emergency keys
- Multiple door chime per zone
- Adjustable backlight and keypad buzzer
- Wire channel
- Dual wall-mount and front cover tamper
- Easy-to-install mounting hinge
- Surface or single-gang box mount
- AC status ICON
- RFK5508 includes all of the same features and supports 32 wireless zones and 16 wireless keys

Approval Listings: European CE Directives (EMC), INCERT (Belgium), IMQ (Italy) Livello 2, SBSC (Sweden) Larmklass 2, EN 50131-1 Grade 2, Class II Environmental, FCC/IC, UL/ULC, F&P Grade 2 (Denmark), SVK Grade 2 (Finland), FG Grade 2 (Norway), NCP (Holland)



## LED5511Z PowerSeries 8-Zone LED Keypad

- Modern, slim-line portrait keypad
- Large, backlit buttons on keypad for trouble-free viewing and activation
- 4 programmable function keys
- Dual FAP keys
- Dual tamper support
- Zone input
- Surface or single-gang box mount
- Wire channel

Approval Listings: European CE Directives (EMC), FCC/IC, UL/ULC, EN50131-1 Grade 2, Class II Env



## LCD5511 PowerSeries 64-Zone Icon LCD Keypad

- Modern, slim-line portrait keypad
- Large, backlit buttons on keypad for trouble-free viewing and activation
- Intuitive symbols and backlit display
- Input/Output terminal can be programmed to operate as a zone input, programmable output or as a low temperature sensor
- 4 programmable function keys
- 8 partition support
- Dual FAP keys
- Wire channel
- New AC status ICON

Approval Listings: European CE Directives (EMC), FCC/IC, UL/ULC, EN50131-1 Grade 2, Class II Env



## PC1555RKZ PowerSeries 8-Zone LED Keypad

- LED status lights for zones and status functions
- Zone input

Approval Listings: European CE Directives (EMC), FCC/IC, UL/ULC, CERT (Tunisia)





## Keypad Overview | PowerSeries Keypad Features

General Features	PK5500*	PK5501*	PK5516*	PK5508*
Display Type	LCD/ALPHA	LCD/FIXED	LED	LED
Zone Support	64	64	16	8
Partition Support	8	8	8	8
Number of Function Keys	5	5	5	5
Dedicated Function Keys	Yes	Yes	Yes	Yes
Dedicated FAP Keys	Yes	Yes	Yes	Yes
Dual FAP Keys	No	No	No	No
Key Size	Large	Large	Large	Large
AC Status LED	Yes	Yes	Yes	Yes
Integrated Low Temperature Sensor	Yes	Yes	Yes	Yes
Zone Input	Yes	Yes	Yes	Yes
PGM Output	Yes	Yes	Yes	Yes
DEOL Zone Supervision	Yes	Yes	Yes	Yes
Intuitive Clock Programming	Yes	No	No	No
Backlighting Adjustment Control	Yes	Yes	Yes	Yes
Buzzer Adjustment Control	Yes	Yes	Yes	Yes
Multiple Chime Per Zone	Yes	Yes	Yes	Yes
<b>Hardware</b>				
Bezel Color	White	White	White	White
Soft/Hard Lens	Hard	Hard	Hard	Hard
Profile	Landscape	Landscape	Landscape	Landscape
* Integrated RF Receiver Models	RFK5500	RFK5501	RFK5516	RFK5508
Buzzer/Backlighting Adjustment Retained After Power Loss	Yes	Yes	Yes	Yes
"Hands Free" Installation Hinge	Yes	Yes	Yes	Yes
Wire Channel	Yes	Yes	Yes	Yes
Single-Gang Box Mount	Yes	Yes	Yes	Yes
Double-Gang Box Mount	Yes	Yes	Yes	Yes
Case Tamper (Dual Tamper Support)	Yes	Yes	Yes	Yes

\* RFK versions of these keypads are available with a built-in wireless receiver and support 32 wireless zones and 16 wireless keys

## Keypad Overview | PowerSeries Keypad Features Continued

General Features	LCD5511	LED5511Z
Display Type	LCD/FIXED	LED
Zone Support	64	8
Partition Support	8	2
Number of Function Keys	4	4
Dedicated Function Keys	No	No
Dedicated FAP Keys	No	No
Dual FAP Keys	Yes	Yes
Key Size	X-Large	X-Large
AC Status LED	No	No
Integrated Low Temperature Sensor	Yes	No
Zone Input	Yes	Yes
PGM Output	Yes	No
DEOL Zone Supervision	No	No
Intuitive Clock Programming	No	No
Backlighting Adjustment Control	No	No
Buzzer Adjustment Control	Yes	Yes
Multiple Chime Per Zone	Yes	No
<b>Hardware</b>		
Bezel Color	White	White
Soft/Hard Lens	Soft	Soft
Profile	Portrait	Portrait
* Integrated RF Receiver Models	N/A	N/A
Buzzer/Backlighting Adjustment Retained After Power Loss	No	No
"Hands Free" Installation Hinge	No	No
Wire Channel	Yes	Yes
Single-Gang Box Mount	Yes	Yes
Double-Gang Box Mount	No	No
Case Tamper (Dual Tamper Support)	Yes	Yes

\* RFK versions of these keypads are available with a built-in wireless receiver and support 32 wireless zones and 16 wireless keys



## PC5100 PowerSeries Addressable Zone Expander

- Connect up to 32 addressable detectors (AML)
- Detectors can be home-run, t-tapped or daisy chained
- Easy detector enroll process
- Compatible with PC1616, PC1832 and PC1864 control panels

Approval Listings: European CE Directives (EMC), FCC/IC, UL/ULC



## PC5108 PowerSeries 8-Hardwire Zone Expander

- Adds 8 hardwire zones
- AUX power, 125 mA (PTC protected)
- Compatible with PC1616, PC1832 and PC1864 control panels

Approval Listings: European CE Directives (EMC), INCERT (Belgium), NCP (Holland), NFA2P Type 2 (France), IMQ (Italy) Livello 2, SBSC (Sweden) Larmklass 2, EN 50131-1 Grade 2, Class II Environmental, FCC/IC, UL/ULC, CERT (Tunisia)



## RF5132-433 & RF5132-868 PowerSeries Wireless Receivers

- Supports 32 wireless zones, 16 wireless keys
- All wireless detectors are fully supervised for communication integrity
- RF5132-433 is compatible with all PowerSeries control panels
- Available in both 433 MHz and 868 MHz

RF5132-433: European CE Directives (EMC, R&TTE, LVD), INCERT (Belgium), NCP (Holland), IMQ (Italy) Livello 2, ICASA (South Africa), FCC/IC, UL/ULC

RF5132-868: European CE Directives (EMC, R&TTE, LVD), ICASA (South Africa)

Approval Listings for Version 6.0 and higher: European CE Directives (EMC, R&TTE, LVD), EN50131 Grade 2, ENV Class II



## PC5200 & PC5204 PowerSeries Power Supply Modules

- Provides up to 1 Amp @ 12 VDC
- Fully supervised for AC failure, low battery and AUX failure
- PC5204 adds 4 programmable high current voltage outputs: rated at 1 Amp @ 12 VDC, output #1 can be used as a supervised bell output
- Connect one PC5204 and up to four PC5200 supervised modules on a system
- Compatible with PC1616, PC1832 and PC1864 control panels

PC5200: Approval Listings: European CE Directives (EMC), FCC/IC, UL/ULC

PC5204: Approval Listings: European CE Directives (EMC), INCERT (Belgium), NCP (Holland), NFA2P Type 2 (France), IMQ (Italy) Livello 2, SBSC (Sweden) Larmklass 2, EN 50131-1 Grade 2, Class II Environmental, FCC/IC, UL/ULC



## PC5208 PowerSeries Programmable Output Module

- Provides 8 low current (50 mA) PGM voltage outputs
- Compatible with PC1616, PC1832 and PC1864 control panels

Approval Listings: European CE Directives (EMC), INCERT (Belgium), NCP (Holland), IMQ (Italy) Livello 2, SBSC (Sweden) Larmklass 2, EN 50131-1 Grade 2, Class II Environmental, FCC/IC, UL/ULC

# Integration

## PC5320 Multiple Wireless Receiver Module

- Can be used to connect up to 4 wireless receivers for increased coverage
- Multi-frequency support for combination of 900/433 MHz receivers
- Compatible with all PowerSeries control panels

Approval Listings: European CE Directives (EMC), INCERT (Belgium), NCP (Holland), FCC/IC, UL/ULC



## PC5400 Printer Interface Module

- Can be used to support a serial printer
- Compatible with PC1616, PC1832 and PC1864 control panels

Approval Listings: European CE Directives (EMC), INCERT (Belgium), NCP (Holland), FCC/IC, UL/ULC



## ESCORT 5580TC Telephone Interface & Automation Control Module

- Turns any touchtone phone into a talking keypad
- Programmable labels: 6 words per label, 240+ word library
- Built-in X-10 interface: supports up to 32 X-10 devices, 16 schedules, 8 modes
- Compatible with PC1616, PC1832 and PC1864 control panels

Approval Listings: European CE Directives (EMC, R&TTE, LVD), INCERT (Belgium), NCP (Holland), NFA2P Type 2 (France), FCC/IC, UL/ULC



## PC5601 Status Module

- Tri-color LED provides security system status at a glance
- Standard single-gang footprint
- Sleek plastic enclosure complements home décor
- Color-coded wiring harness included
- Only supports partition 1
- KEYBUS-compatible with all PowerSeries control panels



## IT-100 PowerSeries Integration Module

- Bi-directional RS-232 interface
- Real-time zone status
- Fully programmable
- 4-wire hook-up to KEYBUS
- Virtual keypad mode
- Supported by many integration drivers
- Compatible with all PowerSeries control panels

Approval Listings: FCC/IC





### PC5950 Universal 2-Way Vox Audio Verification Module

- Supports both 2-way audio VOX and push-to-talk verification
- Supports 4 microphones and 4 speakers
- Silent/Listen-in functionality on hold-up alarms (activates only when an alarm occurs)
- User call-in feature
- KEYBUS direct connect allows all programming to be performed at the system keypad or remotely using DLS2002 software
- KEYBUS compatible with all PowerSeries control panels
- Universal installation compatibility with any control panel using either PGM and/or Bell dry contact outputs

Approval Listings: European CE Directives (EMC, R&TTE, LVD), FCC/IC



### PC5961 Stand-Alone Audio Station

- Equipped with speaker/microphone
- New modern look
- Specifically designed for 2-way voice verification
- 4-wire connection to module
- Surface or single-gang box mount
- Compatible with PC5950 and PC5900 modules

Approval Listings: European CE Directives (EMC), FCC/IC



### PC5962 Contoured Audio Station

- Equipped with speaker/microphone
- Fits seamlessly to side of PK/RFK series of keypads
- New modern look
- Specifically designed for 2-way voice verification
- 4-wire connection to module
- Compatible with PC5950 and PC5900 modules

Approval Listings: European CE Directives (EMC), FCC/IC



### PC5964 Large Speaker Station

- Equipped with speaker/microphone
- New modern look
- Specifically designed for 2-way voice verification
- Bell follower functionality (replaces internal sounder on premises.PC5950 only)
- 4-wire connection to module
- Surface or single-gang box mount
- Compatible with PC5950 and PC5900 modules

Approval Listings: European CE Directives (EMC), FCC/IC



# Fire Panels

## CFD4800 Conventional Fire Panel

- Available in 2, 4 and 8 zone non-expandable fire panels
- 8 to 24 zone expandable fire panel
- Up to 21 devices per zone
- Gas detector compatible (4 -20mA gas detectors)
- Extinguishing module

Approval Listings: European CE Directives (EMC, CPD)

Model	Description
CFD4802	2 zone fire control panel
CFD4804	4 zone fire control panel
CFD4808	8 zone fire control panel
CFD4824	8 expandable to 24 zone fire control panel
CFD4001	Repeater panel for CFD series
J400-LCD	Display module
PCJ400BRIDGE	Serial interface module
CFD4808EXT	Extinguisher module with microprocessor control
J400EXP8	8 zone expander module for CFD4824 panels



## AFD2000 Addressable Fire Panels

- One and two loop control panels and remote repeater display module
- Each loop supports 250 FireClass Digital Loop addressable detectors
- Devices can be mixed and matched in any combination
- Network up to 8 FireClass control panels via the onboard RS485 bus
- FireClass500 Console Software

Approval Listings: European CE Directives (EMC, CPD)

Model	Description
AFD2010	One Loop Addressable Fire Panel
AFD2020	Two Loop Addressable Fire Panel
AFD2001	Repeater Display Module





### PC4020 MAXSYS Control Panel

- 16 on-board zones
- Expandable up to 128 zones using hardwire, wireless modules and addressable zones
- Supports up to 16 hardwired keypads
- 8 partitions
- Expandable to 64 wireless zones
- 1,500 user codes (4 or 6 digit)
- 3,000 event buffer
- 9 account and 3 phone numbers
- Built-in telephone line and siren supervision
- Auto SIA and Contact ID formats
- Supports GSM and T-Link™ alarm communicators
- Full upload/download support with DLS software

Approval Listings: European CE Directives (EMC, R&TTE, LVD), INCERT (Belgium), FCC/IC, UL/ULC, SBSC (Sweden), ETA (Ethiopia)



### LCD4501 MAXSYS Programmable-Message LCD Keypad

- Connect up to 16 keypads
- Large, backlit, 2-line, 32-character display
- Plain-language display of zone status, system status, trouble conditions, event buffer, system instructions, date and time
- Ready, Armed and Trouble LEDs
- 5 programmable function keys
- 4 keypad-activated alarms: Panic, Auxiliary, Fire and Duress
- Backlight boost

Approval Listings: European CE Directives (EMC), INCERT (Belgium), FCC/IC, UL/ULC



### PC4108A & PC4116 MAXSYS 8/16 Hardwire Zone Expanders

- PC4108A adds 8 hardwire zones
- PC4116 adds 16 hardwire zones
- AUX power rated at 250 mA (PTC protected)

PC4108A: Approval Listings: European CE Directives (EMC), INCERT (Belgium), FCC/IC, UL/ULC

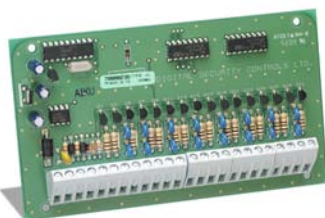
PC4116: Approval Listings: FCC/IC, UL/ULC, Not CE Listed



### PC4204/PC4204CX Power Supply/Relay Output/Combus Repeater Module

- Connect up to 16 modules
- Fully supervised for AC failure, low battery and AUX failure
- 4 programmable form 'C' relays

Approval Listings: European CE Directives (EMC), INCERT (Belgium), FCC/IC, UL/ULC



### PC4216 16 Low Current Output Module

- Provides 16 programmable outputs: rated at 50 mA @ 12 VDC
- Connect up to 9 PC4216 modules per system

Approval Listings: FCC/IC, UL/ULC



### PC4401 Data Interface Module

- Connect up to 4 modules
- Capable of performing as either a bi-directional RS-232 interface, PC-Link isolator, printer module
- Real-time zone status
- Fully programmable
- 4-wire hook-up to COMBUS

Approval Listings: European CE Directives (EMC), FCC/IC, UL/ULC

## ESCORT4580 Telephone Interface and Automation Control Module

- Turns any touchtone phone into a talking keypad
- Programmable labels: 6 words per label, 240+ word library
- Built-in X-10 interface: supports up to 32 X-10 devices, 16 schedules, 8 modes
- Available in English, Spanish and French

Approval Listings: European CE Directives (EMC, R&TTE, LVD), FCC/IC, UL/ULC



## PC4632 & PC4664 32/64 Point Graphic Annunciators

- Egg-crate backplate for flexible LED locations
- Pre-printed point display transparency
- Clear transparencies (2) for custom graphics

PC4632: Approval Listings: Not CE Listed, FCC/IC, UL

PC4664: Approval Listings: European CE Directives (EMC), FCC/IC



## PC4820 2-Reader Access Control Module

- Connect up to 16 modules
- Multiple reader technologies
- 2 supervised lock outputs: 250 mA per output
- 64 user access levels
- 99 date schedules
- 2 access door support per module for up to total of 32 on system
- 4 holiday groups
- Arm/Disarm partitions via access control
- PC4053 beige cabinet included

Approval Listings: European CE Directives (EMC), FCC/IC, UL/ULC



## RF4164-433 Wireless Receiver

- Supports 64 wireless zones, 16 wireless keys
- Up to 8 receivers on one system
- All wireless detectors are fully supervised for communication Integrity

Approval Listings: CE Directives (EMC, R&TTE, LVD), FCC/IC, UL/ULC



## T-REX Request-To-Exit Detector

- MAXSYS supports passive infrared request-to-exit detector with patented X-Y targeting™ and DSP (Digital Signal Processing)
- To order or request more information on Kantech products, please visit [www.kantech.com](http://www.kantech.com)

Approval Listings: UL294, CE, FCC, ULC



**KANTECH™**

A Tyco International Company

## Readers

- MAXSYS supports a wide range of 26-bit Weigand readers: Polaris™, ioProx™, Shadowprox™, HID and Kantech XSF Technologies
- To order or request more information on Kantech products, please visit [www.kantech.com](http://www.kantech.com)

Approval Listings: FCC Part 15 Class B, CE, UL

**KANTECH™**

A Tyco International Company



sensors & accessories



## 433 & 868 MHz Wireless

### WT4989 | WT8989 2-Way Wireless Key

- Backlit ICON display
- Built-in buzzer for audible feedback
- Key tactile feedback
- 4 one touch function keys, programmable or up to 6 functions
- Status button indication
- Wireless key keylock
- Active alarm indication
- Water resistant
- Multi-function clip
- Nominal Battery life - 3 years
- Compatible with ALEXOR 433 MHz and 868 MHz



Approval Listings for WT4989 (433 MHz): European CE Directives (EMC, R&TTE, LVD), ICASA (South Africa), UL/ULC, FCC/IC, SBSC (Sweden), F&P (Denmark), FFFS (Finland), NCP (Holland), INCERT (Belgium), PD6662 (UK), EN50131 Grade 2, ENV Class II, ATS Class 2

Approval Listings for W8989 (868 MHz): European CE Directives (EMC, R&TTE, LVD), SBSC (Sweden), F&G (Norway), F&P (Denmark), FFFS (Finland), PD6662 (UK), EN50131 Grade 2, ENV Class II, ATS Class 2

### WS4938W | WS8938W 1-Button Personal Panic

- Activation via 1 large, easy-to-use button
- Full 2-second delay on panic button
- Integrated LED to indicate signal transmission
- Long-life lithium batteries included
- Neck strap and multifunction belt clip included
- Reliable 433 MHz and 868 MHz technology
- Water resistant
- Supervised



Approval Listings for WS4938W (433 MHz): European CE Directives (EMC, R&TTE, LVD), FCC/IC, UL/ULC, ICASA (South Africa)

Approval Listings for WS8938W (868 MHz): European CE Directives (EMC, R&TC LVD), ICASA (South Africa)

### WS4938-2W 2-Button Personal Panic

- Activation via 2 large, easy-to-use buttons
- Full 2-second delay on panic button
- Integrated LED to indicate signal transmission
- Neck strap and multifunction belt clip included
- Reliable 433 MHz technology
- Water resistant
- Long-life lithium batteries included
- Supervised



Approval Listings: European CE Directives (EMC, R&TTE, LVD)

### WS4939EU | WS8939W 4-Button Wireless Key

- Durable, scratch-resistant buttons
- 4 programmable function keys
- Long-life lithium batteries included
- Full 3-second delay on panic alarm to reduce false alarms
- Multifunction belt clip included
- Reliable 433 MHz and 868 MHz technology
- Optional generic rubber insert included
- Water resistant



Approval Listings for WS4939EU (433 MHz): European CE Directives (EMC, R&TTE, LVD), INCERT (Belgium), NCP (Holland), IMQ (Italy) Livello 1, SBSC (Sweden) Larmklass R, EN50131-3, EN50131-6, Grade 2, Class II Environment, CERT (Tunisia), ICASA (South Africa), FCC/IC, UL/ULC, F&P (Denmark)

Approval Listings for WS8939W (868 MHz): European CE Directives (EMC, R&TTE, LVD), SBSC (Sweden) Larmklass R, F&P (Denmark), FG Grade 2 (Norway), ICASA (South Africa)



### WS4945W | WS8945W Wireless Door/Window Contact

- Built-in reed switch
- Normally closed external contact input
- 1 lithium battery included
- Reliable 433 MHz and 868 MHz technology
- Available in brown housing
- Case and wall tamper

Approval listings for WS4945W (433 MHz): European CE Directives (EMC, R&TTE, LVD), INCERT (Belgium), NCP (Holland), IMQ (Italy) Livello 1, SBSC (Sweden) Larmklass R, EN50131-2-6, EN50131-6, Grade 2, Class II Environment, ICASA (South Africa), FCC/IC, UL/ULC, F&P (Denmark), CERT (Tunisia)

Approval listings for WS8945W (868 MHz): European CE Directives (EMC, R&TTE, LVD), SBSC (Sweden) Larmklass R, F&P (Denmark), FG Grade 2 (Norway), ICASA (South Africa)



### WS4975W | WS8975W Vanishing Contact

- Built-in reed switch
- Wafer-thin profile
- Long-life lithium battery included
- 5/8" (16 mm) magnet gap
- Includes double-sided tape
- Reliable 433 MHz and 868 MHz technology

Approval Listings: European CE Directives (EMC, R&TTE, LVD)



### WS4904W | WS4904PW | WS8904W | WS8904PW Wireless Pet-Immune Passive Infrared Detector

- WS4904W replaces the WLS904L-433W
- WS4904PW replaces the WLS904PL-433W
- Based on the Bravo® 3D hardwire motion detector
- High-traffic shutdown
- WS4904PW/WS8904PW features pet immunity up to 27 kg (60 lbs)
- 1 lithium battery included
- Reliable 433MHz and 868 MHz technology

Approval listings for WS4904W/WS4904PW (433 MHz): European CE Directives (EMC, R&TTE, LVD), INCERT (Belgium), NCP (Holland), IMQ (Italy) Livello 1, SBSC (Sweden) Larmklass R, EN50131-2-2, EN50131-6, Grade 2, Class II Environment, ICASA (South Africa), FCC/IC, UL/ULC, F&P (Denmark), CERT (Tunisia)

Approval listings for WS8904W/WS8904PW (868 MHz): European CE Directives (EMC, R&TTE, LVD), SBSC (Sweden) Larmklass R, F&P (Denmark), FG Grade 2 (Norway), ICASA (South Africa)



### WS4913 EU | WS8913 EU Wireless CO Detector

Colorless, tasteless, odorless but deadly, carbon monoxide (CO) is impossible to detect without a warning device. The WS4913 EU Wireless Carbon Monoxide Detector from DSC is the perfect complement to DSC's ALEXOR and the 2-Way Wireless Security Suite. The WS4913 EU provides frontline protection against the silent threat of carbon monoxide poisoning.

- Slim-line design
- Built-in 85dB alarm at 10 ft (3 m)
- Malfunction supervision
- Low sensitivity supervision
- Electrochemical sensing technology
- Transmits RF status, low battery and tamper condition
- Hush feature
- Wall tamper
- Low battery supervision
- Onboard LEDs indicate:
  - \* Red – Alarm
  - \* Yellow – Trouble
  - \* Green – Power
  - \* Amber – Warm up
- 4-5 year battery life
- End-of-Life (EOL) indicator (5.5 years)
- Compatible with ALEXOR
- Reliable 433 MHz and 868 MHz technology

Approval Listings: CE, EN50291



### Coming Soon

- Compatible with PowerSeries 4.5 and higher

## WS4916EU | WS8916W Wireless Photoelectric Smoke Detector with Heat

- Automatic drift compensation
- Built-in, dual-sensor heat detector with fixed heat and rate of rise (non UL listed)
- Built-in 85 dB horn
- Local test button
- Low profile design
- High/Low sensitivity reporting
- Low battery indication
- Easy-maintenance removable smoke chamber
- Non-contact sensitivity reading with handheld test meter (FSD-100)
- Long-life lithium batteries included
- EN /UL/ULC listed for residential applications
- Reliable 433 MHz and 868 MHz technology

Approval Listings for WS4916EU (433 MHz): European CE Directives (EMC, R&TTE, LVD, CPD), ICASA (South Africa), FCC/IC, UL/ULC

Approval Listings for WS8916W (868 MHz): European CE Directives (EMC, R&TTE, LVD, CPD), ICASA (South Africa)



## WT4901 | WT8901 2-Way Wireless Indoor Siren

- Siren Output – 85dB
- Siren sounds for alarms, door chimes, entry/exit delay and troubles
- Onboard test button
- Transmits RF status, low battery and tamper condition
- Front and back tamper detection
- Front and back tamper detection
- Nominal battery life - 1 year
- Compatible with ALEXOR 433 MHz and 868 MHz

Approval Listings: European CE Directives (EMC, R&TTE, LVD), FCC/IC, UL/ULC, CERT (Tunisia), SBSC (Sweden), F&G (Norway/868 MHz), F&P (Denmark), FFFS (Finland), NCP (Holland), INCERT (Belgium), PD6662 (UK), EN50131-4 Grade 2, ENV Class II, ATS Class 2, ICASA (South Africa)



## WT4911 | WT8911 2-Way Wireless Outdoor Siren

- Siren Output – 100dB
- Siren sounds for alarms and squawks
- Strobe light functionality for visual indication
- Provides temperature to WT5500 Wire-free keypad
- Transmits RF status, low battery and tamper condition
- Large print area for company logo
- Front and back tamper detection
- IP34 rating
- Nominal battery life – 2 to 3 years
- Strobe available in blue, red or amber
- Compatible with ALEXOR 433 MHz and 868 MHz technology

Approval Listings: European CE Directives (EMC, R&TTE, LVD), FCC/IC, UL/ULC, SBSC (Sweden), F&G (Norway/868 MHz), F&P (Denmark), FFFS (Finland), NCP (Holland), INCERT (Belgium), PD6662 (UK), EN50131-4 Grade 2, ENV Class IV, ATS Class 2, ICASA (South Africa)



## WS4985W | WS8985W Wireless Flood Detector

The wireless flood detector is based on the WS4945 wireless door/window contact that is connected to a water probe through a 6 foot-wire. The product is enrolled as a flood zone detector with the following DSC control panels: ALEXOR, PowerSeries 9045, PC1616, PC1832, PC1864, PC4020, and is fully supervised.

- Built-in reed switch
- Normally closed external contact input
- 1 lithium battery included
- Case and wall tamper
- End-of-line resistor
- 4 year battery life

Approval Listings: FCC/IC, European CE Directives (EMC, R&TTE, LVD)





## WS4920 | WS8920 Wireless Repeater

- Greatly extends the range of DSC 1-way wireless devices
- Backward compatible with existing security systems including ALEXOR, PowerSeries 9045, PowerSeries and MAXSYS
- Identifies the optimal location for mounting taking in to consideration noise and interference
- Quick enrolment of DSC 1-way wireless devices
- Status LEDs for AC, battery and RF Jam
- Up to four repeaters can be installed for each panel/receiver
- Supports up to 164 wireless devices
- Wall and case tamper protection
- Aesthetically pleasing design

Approval Listings: CE Directives (EMC, R&TTE, LVD), FCC/IC, UL/ULC



## WLS912L-433W Wireless Glassbreak Detector

- Based on the Acuity® glassbreak detector
- 2 lithium batteries included
- Tamper-activated test mode: should be tested using the AFT-100 glassbreak simulator

Approval Listings: European CE Directives (EMC, R&TTE, LVD), FCC/IC, UL/ULC, INCERT (Belgium), NCP (Holland), Class II Environment, ICASA (South Africa), EN50131-2-7 Grade 2 (in progress)



## WP-433 Wireless Device Programmer

- Simplifies enrolling and programming of wireless devices
- Supports all DSC door/window contacts, PIRs, glassbreak detectors and wireless keys



## WS8965W Tri-Zone Wireless Door/Window Contact

- 3 zones in 1 (each zone has an individual serial number)
- 1 reed/magnet combination zone
- Tilt switch mode for overhead doors
- 2 normally closed external contact inputs
- Long-life lithium battery included
- 1/2" (13 mm) maximum magnet gap
- Low-battery LED indicator
- Case tamper
- Reliable 868 MHz technology
- Includes backplate

Approval Listings: European CE Directives (EMC, R&TTE, LVD), ICASA (South Africa)



# Addressable

## AMB-300 Addressable Passive Infrared Detector

- Based on the Bravo® 3 hardwire motion detector
- Patented MLSP (Multi-Level Signal Processing)
- Interchangeable lenses: wall-to-wall lens (standard), curtain lens, pet-immune lens and corridor lens
- Built-in tamper switch

Approval Listings: European CE Directives (EMC), FCC/IC, UL/ULC



## AMB-600 Addressable Pet-Immune Passive Infrared Detector

- Based on the Bravo® 6 hardwire motion detector
- Provides pet immunity up to 39 kg (85 lbs)
- Patented MLSP (Multi-Level Signal Processing)
- Built-in tamper switch

Approval Listings: European CE Directives (EMC), FCC/IC, UL/ULC



## AMB-500 Addressable Ceiling-Mount Passive Infrared Detector

- Based on the Bravo® 5 hardwire motion detector
- Coverage diameter based on mounting height
- Built-in tamper switch

Approval Listings: European CE Directives (EMC), FCC/IC, UL/ULC



## AMA-100 Addressable Glassbreak Detector

- Based on the Acuity® hardwire glassbreak detector
- Detects all types of breaking glass: plate, laminated, safety and tempered
- Can be tested using the glassbreak simulator (AFT-100)
- Built-in tamper switch

Approval Listings: European CE Directives (EMC), FCC/IC, UL/ULC





**FSB-210 Series Addressable Photoelectric Smoke Detectors**  
**FSB-210B (Without Heat Sensor)**  
**FSB-210BT (With Heat Sensor) – Fixed heat with rate of rise (non UL listed)**

- Easy-maintenance removable smoke chamber
- Non-contact sensitivity reading with handheld test meter (FSD-100)
- Automatic drift compensation
- Self diagnostics
- Available in MEA only

Approval Listings: Not CE Listed, FCC/IC, UL



**Addressable Contact Modules**

Model	Description
AMP-700	Door/Window contact with built-in reed switch
AMP-701	Door/Window contact with normally closed external contact input
AMP-702	Fire point module with normally open, EOL resistor supervised external contact input
AMP-704	4-zone door/window contact with normally closed, single or double EOL inputs

AMP-700, AMP-701, AMP-702: Approval Listings: European CE Directives (EMC), FCC/IC, UL/ULC

AMP-704: Approval Listings: Not CE Listed, FCC/IC, UL/ULC



**AML-770B Loop Isolator Module**

- Can be used to isolate burglary detectors from fire detectors on the same wire run

Approval Listings: European CE Directives (EMC), FCC/IC, UL/ULC



**AMX-400 Loop Repeater/Isolator Module**

- Can be used to repeat and re-power the AML loop to allow for longer wire runs
- Requires 12 VDC power source
- Will isolate the wire run in the event of a problem
- Provides additional 170 mA

Approval Listings: European CE Directives (EMC), FCC/IC, UL/ULC

# Motion Detectors

## BV-201 Bravo® 201 PIR Motion Detectors

The Bravo 201 motion detectors feature patented Multi-Level Signal Processing (MLSP) for accurate detection of human IR energy over a broad range of temperatures.

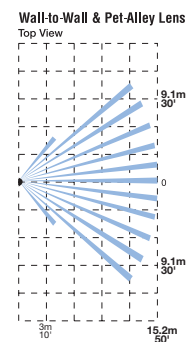
- Exceptional catch performance at elevated temperatures
- High-level static and transient protection
- Sensitivity adjustment to configure the detector for normal or hostile environments

Bravo 201: Approval Listings: European CE Directives (EMC), UL/ULC, , INCERT (Belgium), NCP (Holland)

Model	Description
BV-201	Form 'A' alarm contact
BV-L1	Wall-to-Wall lens
BV-L2	Corridor lens
BV-L3	Curtain lens
BV-L4	Pet Alley lens



Coverage Pattern



## Bravo® 5 360° Ceiling-Mount PIR Motion Detectors

- Temperature compensation for improved catch performance at critical temperatures
- Patented Multi-Level Signal Processing (MLSP) for accurate detection of human IR energy over a broad range of temperatures
- Sensitivity adjustment to configure the detector for normal or hostile environments
- High-level static and transient protection
- Exceptional white light immunity
- Excellent RF immunity
- Digital signal analysis for consistent detection throughout the coverage pattern

### PIR only

Model	Description
BV-500	Form 'A' alarm contact
BV-501	Form 'A' alarm contact & tamper switch

BV-500: Approval Listings: European CE Directives (EMC), EN50131-2-2 Grade 2, Class II Environment, FCC/IC, UL/ULC

BV-501: Approval Listings: European CE Directives (EMC), INCERT (Belgium), NCP (Holland), EN50131-1 Grade 2, Class II Environment, FCC/IC, UL/ULC

### PIR and Glassbreak

Model	Description
BV-500GB	Form 'A' alarm contact (motion), form 'C' alarm contact (glassbreak)
BV-501GB	Form 'A' alarm contact (motion), form 'C' alarm contact (glassbreak) & tamper switch

BV-500GB: Approval Listings: European CE Directives (EMC), EN50131-1 Grade 2, Class II Environment, FCC/IC, UL/ULC

BV-501GB: Approval Listings: European CE Directives (EMC), INCERT (Belgium), EN50131-1 Grade 2, Class II Environment, FCC/IC, UL/ULC





### Bravo® 6 Twin, Dual-Element, Pet-Immune PIR Motion Detectors

- Digital signal analysis for consistent detection throughout the coverage pattern
- Digital temperature compensation for improved catch performance at critical temperatures
- Patented Multi-Level Signal Processing (MLSP) for accurate detection of human IR energy over a broad range of temperatures
- 38kg (85 lbs) pet immunity

Optional mounting brackets available: DM-W (wall-mount bracket) or DM-C (ceiling-mount bracket)

Model	Description
BV-600	Form 'A' alarm contact
BV-601	Form 'A' alarm contact & tamper switch

BV-600: Approval Listings: European CE Directives (EMC), EN50131-1 Grade 2, Class II Environment, FCC/IC, UL/ULC

BV-601: Approval Listings: European CE Directives (EMC), INCERT (Belgium), EN50131-1 Grade 2, Class II Environment, FCC/IC, UL/ULC



### Encore™ PIR Motion Detectors

Encore PIR motion detectors use a digital, microprocessor-controlled fresnel lens to deliver stable and accurate detection without sacrificing catch performance. Vertical Beam Shaping (VBS) provides pet immunity up to 27 kg (60 lbs), while a unique cover hinge allows the detector to be installed right up to the ceiling.

- Fresnel lens technology
- Digital signal analysis for consistent detection throughout the coverage pattern
- Digital temperature compensation
- Patented Multi-Level Signal Processing (MLSP)
- Vertical Beam Shaping (VBS) provides pet immunity up to 27 kg (60 lbs), available with EC301DP series
- Concealed wiring channel
- EC-BRKT swivel-mount bracket for the ultimate in detector location and installation flexibility (available separately)

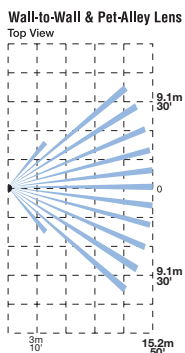
Model	Description
EC301	Form 'A' alarm contact
EC301D	Digital, Form 'A' alarm contact & tamper switch
EC301DP	Digital, Form 'C' alarm contact & tamper switch with pet immunity

EC301: Approval Listings: FCC/IC, UL/ULC

EC301D: Approval Listings: FCC/IC, UL/ULC

EC301DP: Approval Listings: FCC/IC, UL/ULC

#### Coverage Pattern



# LC Series

## LC-100-PI-6PK PIR Detector with Pet Immunity

The LC-100-PI (Form A contact) detector feature intelligent signal analysis for reliable detection, pet immunity up to 25 kg (55 lbs) and a slim design that complements any décor.

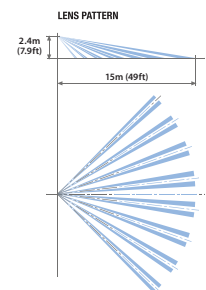
- Form "A" alarm contact and tamper switch
- Digital signal analysis
- Pet immunity up to 25 kg (55 lbs)
- Quad Linear Imaging Technology for sharp analysis of body dimensions and differentiation from backgrounds and pets
- Advanced ASIC-based electronics
- Compact design for residential installations
- Adjustable variable pulse count
- PIR sensitivity adjustment
- Height installation calibration free
- Available in packages of 6 (LC-100-PI-6PK)
- LC-L1ST bracket available separately

Approval Listings: European CE Directives (EMC), FCC/IC, UL/ULC

Model	Description
LC-100-PI-6PK	Form 'A' alarm contact & tamper switch



Coverage Pattern



### LC-L1ST bracket



Ceiling mounting



Wall mounting

## LC-101 PIR Detector with Camera (B&W/Color) & Pet Immunity

The LC-101 utilizes a camera to provide reliable detection and false alarm immunity. The motion detector features trouble-free installation and is ideal for those looking for a sophisticated residential solution or for commercial applications.

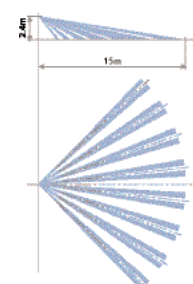
- Form 'A' alarm contact and tamper switch
- Digital signal analysis
- Pet immunity up to 25 kg (55 lbs)
- Quad Linear Imaging Technology for sharp analysis of body dimensions and differentiation from backgrounds and pets
- Advanced ASIC-based electronics
- Wide-range operating voltage
- High reliability, trouble-free operation
- User-friendly installation with or without swivel-mount bracket

Approval Listings: European CE Directives (EMC), FCC/IC, UL/ULC

Model	Description
LC-101-CAMCLPAL	Color PAL
LC-101-CAMCLNTSC	Color NTSC
LC-101-CAMBWCCIR	B&W PAL
LC-101-CAMBWEIA	B&W NTSC



Coverage Pattern



Some products are not available in all countries. Contact your local distributor for details.



## LC-102-PIGBSS Glassbreak Detector with Pet Immunity

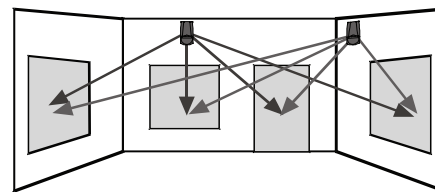
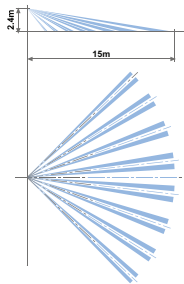
The LC-102-PIGBSS combines proven digital PIR and glassbreak detection technology with intelligent ASIC signal analysis..

- Form 'A' alarm contact and tamper switch
- Digital signal analysis
- Slim profile design
- Exceptional white light immunity
- Pet immunity up to 25 kg (55 lbs)
- Quad Linear Imaging Technology for sharp analysis of body dimensions and differentiation from backgrounds and pets
- Separate PIR and glassbreak sensitivity adjustment
- Features ABS plastic for shock and impact protection
- 2 independent relay outputs for glassbreak and PIR alarm signals
- Advanced ASIC-based electronics
- LC-L1ST bracket available separately

Approval Listings: European CE Directives (EMC), FCC

Model	Description
LC-102-PIGBSS	Digital PIR and Glassbreak Detector with Pet Immunity

Coverage Pattern



Detector Mounting



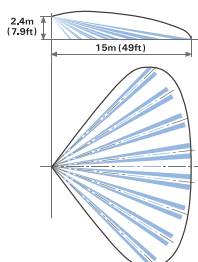
## LC-103-PIMSK-W & LC-104-PIMW-W PIR Detector with Pet Immunity

The LC-103-PIMSK-W and LC-104-PIMW-W are dual-technology motion detectors that combine passive infrared and microwave detection with pet immunity. LC-103-PIMSK-W also support anti-masking. The anti-masking feature prevents intruders from defeating the detector by covering its field of view.

- Anti-masking (LC-103-PIMSK-W)
- Form "A" alarm contact and tamper switch
- Digital signal analysis
- Pet immunity up to 25 kg (55 lbs)
- Microwave detection based on Doppler concept
- Unique microwave motion sensor module with micro-strip patch antenna
- Advanced ASIC-based electronics Height installation calibration free 2-way PIR/ microwave sensitivity adjustment
- Quad Linear Imaging Technology for sharp analysis of body dimensions and differentiation from backgrounds and pets
- User-friendly installation with or without swivel-mount bracket (available separately: LC-L1ST)

Model	Description
LC-103-PIMSK-W	PIR and Microwave Detector with Anti-Masking and Pet Immunity (10.525 GHz)
LC-103-PIMSK-IT	PIR and Microwave Detector with Anti-Masking and Pet Immunity (9.9 GHz)
LC-103-PIMSK-UK	PIR and Microwave Detector with Anti-Masking and Pet Immunity (10.687 GHz)
LC-104-PIMW-W	PIR and Microwave Detector with Pet Immunity (10.525 GHz)
LC-104-PIMW-IT	PIR and Microwave Detector with Pet Immunity (9.9 GHz)
LC-104-PIMW-UK	PIR and Microwave Detector with Pet Immunity (10.687 GHz)

Coverage Pattern



LC-103-PIMSK-W, LC-104-PIMW-W: Approval Listings: European CE Directives (EMC, R&TTE, LVD), FCC/IC, UL/ULC  
 LC-103-PIMSK-IT, LC-104-PIMW-IT: Approval Listings: European CE Directives (EMC, R&TTE, LVD)  
 LC-103-PIMSK-UK, LC-104-PIMW-UK: Approval Listings: European CE Directives (EMC, R&TTE, LVD)

### LC-105-DGB Glassbreak Detector

The LC-105-DGB glassbreak detector distinguishes the sounds of breaking glass from other common sounds found in homes and businesses.

- Form 'A' alarm contact and tamper switch
- Digital signal analysis
- Detects the sound of all types of breaking framed glass
- Phased frequency detector sensor
- Able to adjust sound sensors separately
- Ceiling- or wall-mount installation
- Slim profile design
- Features ABS plastic for shock and impact protection

Approval Listings: European CE Directives (EMC), FCC

Model	Description
LC-105-DGB	Digital Glassbreak Detector



### LC-151 Dual-Tech Outdoor Motion Sensor (Single PIR & Microwave) with adjustable Pet Immunity

The LC-151 is a unique motion detector utilizing a single passive infra-red element and Microwave technology and is designed for outdoor use in the most severe climatic conditions. The LC-151 can also accommodate pets with the addition of optional pet immunity lenses. High reliability is achieved by combining both dual tech hardware with highly sophisticated software, greatly reducing the possibility of false alarms.

- Microwave detection based on Doppler concept
- N.O. & N.C. relays switched at the same time
- Installation height is calibration free from 1.8 m to 2.4 m (6 ft to 8 ft)
- Pet Immune up to 15 kg (33 lbs) without pet immunity lens or up to 36 kg (80 lbs) when using supplied LC-F1-15X pet immunity lens
- PIR sensitivity adjustment
- MW intensity selection
- Temperature compensation
- Microcontroller signal processing
- Front and back tamper protection
- Unique waterproof and seal plastic design
- Detection range: up to 15 m (49 ft)
- Detects human intruders walking or running
- No maintenance required
- High RFI/EMI immunity
- Protection from: direct sunlight, wind up to 30 m/sec, snow and rain, small animals, removal of top cover and removal from mounting bracket
- Rain and dust proof: IP65
- LC-B1-15X wall mount bracket available separately

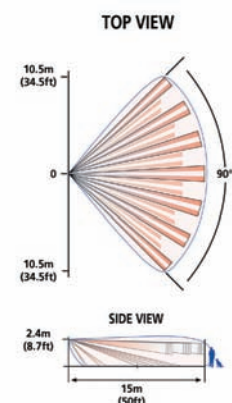
Approval Listings: European CE Directives (EMC, R&TTE, LVD), FCC/IC

Model	Description
LC-151	Form 'C' alarm contact and tamper switches

LC-B1-15X  
Wallmount bracket



Coverage Pattern



Some products are not available in all countries. Contact your local distributor for details.



## LC-171 Dual-Tech Outdoor Motion Sensor (Double PIR & Microwave) with Pet Immunity

The LC-171 is a unique motion detector utilizing dual passive infra-red elements and Microwave technology and is designed for outdoor use in the most severe climatic conditions. The LC-171 can also accommodate pets.

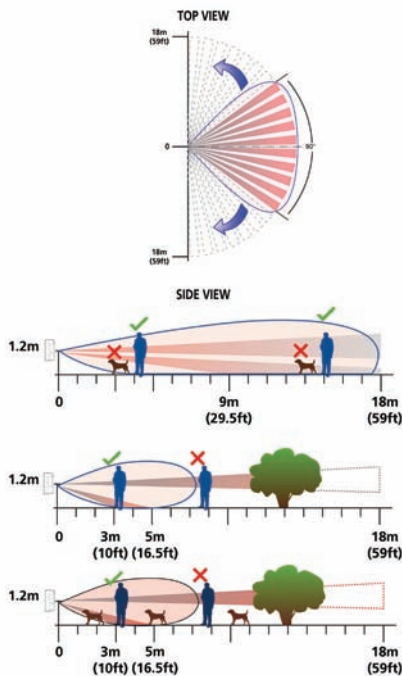
High reliability is achieved by combining both dual tech hardware with highly sophisticated software and an adaptive coverage area, greatly reducing the possibility of false alarms. The active elements are comprised of a dual element PIR and advanced Microwave detector inside a stylish, plastic body.

- Frequency: 24.125 GHz
- Microwave detection based on Doppler concept
- N.O. & N. C. Relays switched at the same time
- Pet immunity up to 35 kg (77 lbs)
- 16 levels of PIR sensitivity adjustment and 3 microwave sensitivity groups
- Temperature compensation
- Microcontroller signal processing
- Audible indication of walk test and intruder detection
- Unique waterproof sealed plastic design
- Detection range: up to 18 m (59 ft)
- Detect human intruders walking or running
- No maintenance required
- High RFI/EMI immunity
- Front and back tamper protection
- Protection from: direct sunlight, wind up to 30 m/sec, snow and rain, small animals, removal of the top cover and removal from mounting bracket
- Rain and dust proof: IP65

Approval Listings: European CE Directives (EMC, R&TTE, LVD), FCC/IC

Model	Description
LC-171	Form 'C' alarm contact and tamper switches

Coverage Pattern

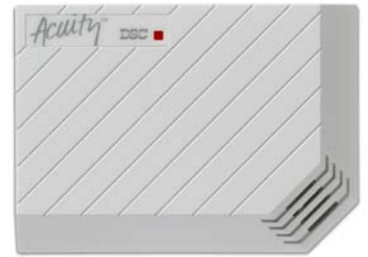




# Glassbreak Detectors

## Acuity® Glassbreak Detectors

- Omni-directional microphone
- Advanced microprocessor-based glassbreak sensor
- High-level static and transient protection
- High RF immunity with SMD construction
- White noise rejection mechanism
- Installer test mode for glassbreak sensor
- FT-100 tester required)
- Alarm memory (latching LED) for glassbreak sensor
- MOV transient/static protection
- Jumper selectable sensitivity range



### Wall-Mount

Model	Description
AC-100	Form 'A' alarm contact
AC-101	Form 'A' alarm contact & tamper switch
AC-102	Form 'C' alarm contact & tamper switch

AC-100: Approval Listings: European CE Directives (EMC), EN50131-1 Grade 2, Class II Environment, FCC/IC, UL/ULC  
 AC-101: Approval Listings: European CE Directives (EMC), INCERT (Belgium), NCP (Holland), EN50131-1 Grade 2, Class II Environment, FCC/IC, UL/ULC  
 AC-102: Approval Listings: European CE Directives (EMC), EN50131-1 Grade 2, Class II Environment, FCC/IC, UL/ULC

### Ceiling Mount

Model	Description
AC-500	Form 'A' alarm contact

AC-500: Approval Listings: European CE Directives (EMC), EN50131-1 Grade 2, Class II Environment, FCC/IC, UL/ULC



## Accessories:

### AFT-100 Glassbreak Simulator

The AFT-100 glassbreak simulator provides the most reliable and accurate indication of the correct mounting location for the detector. Do not install the detector beyond the maximum recommended range, even if the glassbreak simulator reports additional range. Future changes in room acoustics could reduce any additional range.



### SS-102 Shock Sensor

- Unique bi-colored LED to indicate minor or major attacks
- Anti-tamper protection
- Moisture-resistant electronics module
- High immunity to low-frequency false alarms and radio interference
- Sensitivity adjustment
- Compatible with all makes of control panels
- SS-102 is able to monitor for minor vibrations (and count them to a preset limit) and for major attacks at the same time

Approval Listings: European CE Directives (EMC), FCC/IC





### FSA-210/410 Wired Photoelectric Smoke Detectors

- Automatic drift compensation
- Built-in, dual-sensor heat detector (option)
- Built-in 85 dB horn (option)
- Easy-maintenance removable smoke chamber
- Interconnectable using PRM-2W/4W polarity reversal modules
- Non-contact sensitivity reading with handheld test meter (FSD-100)
- Low profile design
- Local test button

MEA Model 'B': Approval Listings: FCC/IC, UL

European Model 'C': Approval Listings: European CE Directives (EMC, R&TTE, LVD, CPD)

#### FSA-210

Model	Description
FSA-210(x)*	2-wire photoelectric smoke detector
FSA-210(x)T*	2-wire photoelectric smoke detector w/heat detector
FSA-210(x)ST*	2-wire photoelectric smoke detector w/integral sounder & heat detector

#### FSA-410

Model	Description
FSA-410(x)*	4-wire photoelectric smoke detector
FSA-410(x)R*	4-wire photoelectric smoke detector w/aux. relay & heat detector
FSA-410(x)S*	4-wire photoelectric smoke detector w/integral sounder
FSA-410(x)ST*	4-wire photoelectric smoke detector w/integral sounder & heat detector
FSA-410(x)RST*	4-wire smoke detector w/integral sounder, aux, relay & heat detector
FSA-410(x)RT*	4-wire smoke detector w/aux, relay & heat detector
FSA-410(x)T*	4-wire smoke detector w/heat detector

\*Legend (x) = 'B' MEA model number | (x) = 'C' European model number



### FSD-100 Handheld Test Meter

Precise and quick sensitivity testing is easily accomplished with the noncontact FSD-100 handheld test meter. Powered by a standard 9V alkaline battery and small enough to fit inside a shirt pocket, the FSD-100 holds 500 readings that can be downloaded to any computer. To initiate a reading, a technician simply holds the FSD-100 near a DSC smoke detector and activates the detector's test button.

Approval Listings: European CE Directives (EMC), FCC/IC, UL/ULC

### Accessories:

#### PRM-2W

Polarity reversal module, PCB for panel mounting (2-wire interconnect)

#### PRM-2WC

Polarity reversal module in plastic case (2-wire interconnect)

#### PRM-4W

Polarity reversal module, PCB for panel mounting (4-wire interconnect)

#### PRM-4WC

Polarity reversal module in plastic case (4-wire interconnect)

#### RM-2

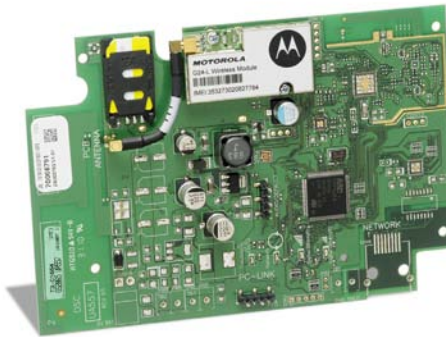
End-of-line power supervisory relay (4-wire detectors only)

PRM-2W, PRM-4W:  
Approval Listings: Not CE Listed, FCC/IC, UL/ULC

RM-2:  
Approval Listings: Not CE Listed, UL/ULC



communications

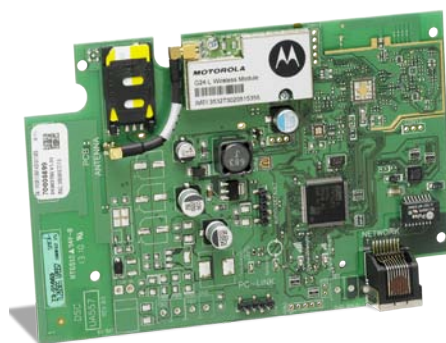


### GS2065 GPRS Cellular Alarm Communicator

- Compatible with ALEXOR Wireless Panel
- Back up and primary GPRS alarm communication
- Panel remote uploading/downloading support via GPRS
- Advanced remote and local programming via DSC DLS IV
- Supervision heartbeats via GPRS
- 128-bit AES encryption via GPRS
- Full event reporting
- Installer Code
- SIA protocol
- PC-Link connection
- Signal strength and trouble display
- Carrier Network Lock and SIM Lock\*
- Quad-Band: 850 MHz, 1900 MHz, 900 MHz and 1800 MHz
- Compatible with Sur-Gard System I/II/III monitoring station receivers
- Antenna Extension Kit available: ANT-15Q, ANT-25Q, ANT-50Q
- Contact ID protocol (with ALEXOR firmware version 1.1 and communicator firmware version 1.1 or higher)
- Command and Control via SMS
- Full Event Notification via SMS

Approval Listings: European CE Directives (EMC, R&TTE, LVD), FCC/IC, UL/ULC, ICASA (South Africa), CERT (Tunisia), SBSC (Sweden), F&G (Norway/3,4,5), F&P (Denmark), FFFS (Finland), NCP (Holland), INCERT (Belgium), PD6662 (UK), EN50131-1, EN50136-1-1/-5 Grade 2, ENV Class II, ATS Class 5

\*Both features are pre-programmed features and available upon request of specific carrier networks.



### TL265GS Internet and GPRS Dual-path Alarm Communicator

- Compatible with ALEXOR Wireless Panel
- Fully redundant Internet and GPRS dual-path alarm communication
- Integrated call routing
- Panel remote uploading/downloading support via GPRS and Internet
- Advanced remote and local programming via DSC DLS IV
- Supervision heartbeats via GPRS and Internet
- 128-bit AES encryption via GPRS and Internet
- Full event reporting
- Installer Code
- SIA protocol
- PC-Link connection
- Signal strength and trouble display
- Carrier Network Lock and SIM Lock\*
- Quad-Band: 850 MHz, 1900 MHz, 900 MHz and 1800 MHz
- Compatible with Sur-Gard System I/II/III monitoring station receivers
- Antenna Extension Kit available: ANT-15Q, ANT-25Q, ANT-50Q
- Contact ID protocol (with ALEXOR firmware version 1.1 and communicator firmware version 1.1 or higher)
- Command and Control via SMS
- Full Event Notification via SMS

Approval Listings: European CE Directives (EMC, R&TTE, LVD), FCC/IC, UL/ULC, ICASA (South Africa), SBSC (Sweden), F&G (Norway/3,4,5), F&P (Denmark), FFFS (Finland), NCP (Holland), INCERT (Belgium), PD6662 (UK), EN50131-1, EN50136-1-1/-5 Grade 2, ENV Class II, ATS Class 5

\*Both features are pre-programmed features and available upon request of specific carrier networks.

## GS2060 GPRS Cellular Alarm Communicator

- Compatible with PC1864/1832/1616 control panels (version 4.1 and higher)
- Back up and primary GPRS alarm communication
- Panel remote uploading/downloading support via GPRS
- Advanced remote and local programming via DSC DLS IV
- Supervision heartbeats via GPRS
- 128-bit AES encryption via GPRS
- Full event reporting
- Installer Code
- SIA protocol
- PC-Link connection
- Signal strength and trouble display
- Carrier Network Lock and SIM Lock\*
- Quad-Band: 850 MHz, 1900 MHz, 900 MHz and 1800 MHz
- Compatible with Sur-Gard System I/II/III monitoring station receivers
- Antenna Extension Kit available: ANT-15Q, ANT-25Q, ANT-50Q
- Contact ID protocol (with PowerSeries firmware version 4.5 and communicator version 1.1 or higher)
- Full Event Notification via SMS

Approval Listings: European CE Directives (EMC, R&TTE, LVD), FCC/IC, UL/ULC, ICASA (South Africa), SBSC (Sweden), F&G (Norway/3,4,5), F&P (Denmark), FFFS (Finland), NCP (Holland), INCERT (Belgium), PD6662 (UK), EN50131-1, EN50136-1-1/-5 Grade 2, ENV Class II, ATS Class 3,4,5

\*Both features are pre-programmed features and available upon request of specific carrier networks.



## TL260GS Internet and GPRS Dual-path Alarm Communicator

- Compatible with PC1864/1832/1616 control panels (version 4.1 and higher)
- Fully redundant Internet and GPRS dual-path alarm communication
- Integrated call routing
- Panel remote uploading/downloading support via GPRS and Internet
- Advanced remote and local programming via DSC DLS IV
- Supervision heartbeats via GPRS and Internet
- 128-bit AES encryption via GPRS and Internet
- Full event reporting
- Installer Code
- SIA protocol
- PC-Link connection
- Signal strength and trouble display
- Carrier Network Lock and SIM Lock\*
- Quad-Band: 850 MHz, 1900 MHz, 900 MHz and 1800 MHz
- Compatible with Sur-Gard System I/II/III monitoring station receivers
- Antenna Extension Kit available: ANT-15Q, ANT-25Q, ANT-50Q
- Contact ID protocol (with PowerSeries firmware version 4.5 and communicator version 1.1 or higher)
- Full Event Notification via SMS

Approval Listings: European CE Directives (EMC, R&TTE, LVD), FCC/IC, UL/ULC, ICASA (South Africa), CERT (Tunisia), SBSC (Sweden), F&G (Norway/868 MHz), F&P (Denmark), FFFS (Finland), NCP (Holland), INCERT (Belgium), PD6662 (UK), EN50131-1, EN50136-1-1/-5 Grade 2, ENV Class II, ATS Class 3,4,5

\*Both features are pre-programmed features and available upon request of specific carrier networks.





## GS3100-K GPRS Universal Cellular Alarm Communicator

- Compatible with most control panels that communicate using the Contact ID format
- Back-up and primary GPRS alarm communication
- Uses GPRS data channel for high-speed, reliable and low-cost communications to Sur-Gard System I, System II and/or III receiver
- Antenna with magnetic base and 2 m cable
- 3 open collector outputs, 4 phone numbers programmable for Contact ID Dialer on GPRS
- Up to 100 telephone numbers (max. 16 digits) programmable for the remote activation of the OC output
- Low current draw allows powering the unit from most alarm panels
- PC-programmable options
- Quad-band: 850 MHz, 1900 MHz, 900 MHz and 1800 MHz

Approval Listings: European CE Directives (EMC, R&TTE, LVD), EN50131-1, EN50136-1-1 Grade 2, ENV Class II, ATS Class 2



## GS3055-IGW GPRS Universal Cellular Alarm Communicator

- Compatible with most control panels that communicate using the Contact ID format
- Full event reporting
- Primary or backup alarm communicator
- Uses GPRS data channel for high-speed, reliable and low-cost communications to Sur-Gard System I, System II and III receiver
- 4 on-board programmable inputs
- 4 programmable outputs (open collector)
- SMS dialer feature allows 13 preset text messages to be sent upon alarm events
- Up to 8 programmable phone numbers for SMS dialer
- Up to 95 phone numbers to control the programmable outputs
- SMS message remote programming
- Simple programming via PC software
- 4 status LEDs to indicate signal strength and operation
- Dual-band GSM (900 MHz/1800 MHz)
- Antenna Extension Kit available: ANT-15, ANT-25, ANT-50

Approval Listings: European CE Directives (EMC, R&TTE, LVD)



## TL150 T-Link Residential IP Alarm Communicator

- Compatible with PowerSeries panels
- Supports PowerSeries control panels
- Instant, always-on IP communication
- Works over local LAN/WAN network or the Internet
- 128-bit AES encryption
- Compatible with 10/100BaseT networks
- Supervised as a KEYBUS module (supervision of both KEYBUS and network connections)
- Supports DHCP (dynamic IP addresses)
- Low network bandwidth usage
- T-Link programming (IP address and account number) through a web-browser interface
- Homeowners can arm/disarm security system and view zone status through a webpage on their home computer
- Compatible with Sur-Gard System I/II/III monitoring station receivers

Approval Listings: European CE Directives (EMC), FCC/IC

## TL250CE T-Link Internet/Intranet Alarm Communicator

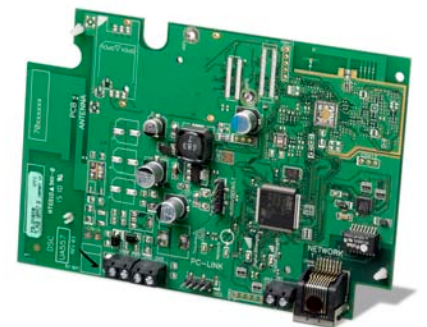
- Compatible with PowerSeries (version 3.2 and higher) and MAXSYS (version 3.31 and higher)
- Supports PowerSeries (version 3.24 and higher) and Maxsys (version 3.31 and higher) control panels
- Instant, always-on IP communication
- Works over local LAN/WAN network or the Internet
- 128-bit AES encryption (NIST approved)
- Supports DHCP (dynamic IP addresses)
- Low network bandwidth requirements
- Compatible with 10/100BaseT networks
- Reports events to 2 different receiver IP addresses
- Polling and hardware substitution protection
- 4 on-board programmable inputs and 2 programmable voltage outputs as standalone module
- Programmable through the PK5500 LCD keypad or T-Link Console software
- Software upgrades via network
- Download control panel via Internet with DLS software
- Compatible with Sur-Gard System I/II/III monitoring station receivers



Approval Listings: European CE Directives (EMC), UL/ULC, FCC/IC

## TL260 T-Link Internet/Intranet Alarm Communicator

- Compatible with PowerSeries panels
- Panel remote uploading & downloading via internet/intranet using DLS IV
- Programmable using DLS IV or keypad
- Supervision heartbeat via internet/intranet
- 128 Bit AES Encryption
- Full event format
- SIA protocol
- Contact ID protocol (with PowerSeries version 4.5 and communicator version 1.1 or higher)



Approval Listings: European CE Directives (EMC, R&TTE, LVD), SBSC (Sweden), F&G (Norway/868 MHz), F&P (Denmark), FFFS (Finland), NCP (Holland), INCERT (Belgium), PD6662 (UK), EN50131-1, EN50136-1-1/-5 Grade 2, ENV Class II, ATS Class 3,4,5

## TL265 T-Link Internet/Intranet Alarm Communicator

- Compatible with ALEXOR
- Panel remote uploading & downloading via internet/ intranet using DLS IV
- Programmable using DLS IV or keypad
- Supervision heartbeat via internet/intranet
- 128 Bit AES Encryption
- Full event format
- SIA protocol
- Contact ID protocol (with ALEXOR version 1.1 and communicator version 1.1 or higher)
- UL Standard & encrypted line security
- ULC Passive or active security levels
- Supports DHCP or static IP addresses



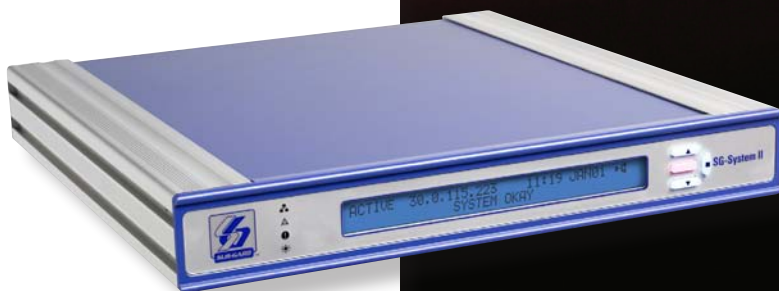
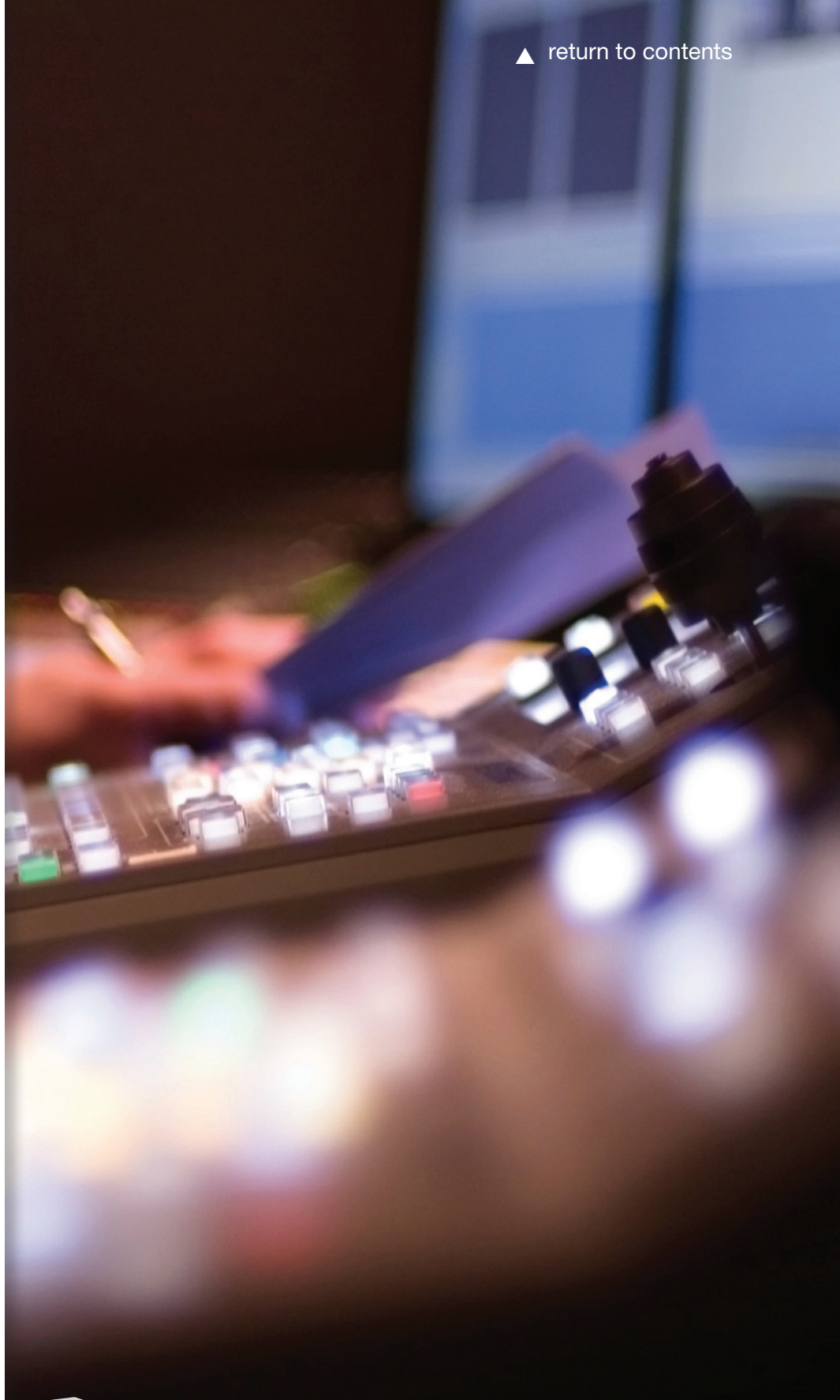
Approval Listings: European CE Directives (EMC, R&TTE, LVD), SBSC (Sweden), F&G (Norway/868 MHz), F&P (Denmark), FFFS (Finland), NCP (Holland), INCERT (Belgium), PD6662 (UK), EN50131-1, EN50136-1-1/-5 Grade 2, ENV Class II, ATS Class 3,4,5

## TL300CE T-Link Universal IP Alarm Communicator

- Compatible with most control panels that communicate using the Contact ID format
- Instant, always-on IP communication
- Works over local LAN/WAN network or the Internet
- 128-bit AES encryption (NIST approved)
- Supports DHCP (dynamic IP addresses)
- Low network bandwidth requirements
- Compatible with 10/100BaseT networks
- Reports events to 2 different receiver IP addresses
- Polling and hardware substitution protection
- 4 on-board programmable zone inputs and 2 programmable voltage outputs as standalone module
- Programmable through the PK5500 LCD keypad or T-Link Console software
- Software upgrades via network
- Compatible with Sur-Gard System I/II/III monitoring station receivers
- 12-24 V support (version 1.5 only)



Approval Listings: European CE Directives (EMC), UL/ULC, FCC/IC



** SUR-GARD**

*A Tyco International Company*



# Monitoring Station Receivers & Line Card Modules



## SG-SYSTEM I/SG-SYSTEM I-IP Dual Phone Line with Optional IP Receiver

- Multi-format receiver
- Integrated scheduled receiver line card testing
- Up to 63 different profiles and up to eight different handshakes per profile
- 500-event memory buffer on each individual line card
- Patented ANI and DNIS reception, Automatic Handshake Selection (AHS), Caller ID capability and virtual configurations
- Continuous verification of computer (automation) connection
- One parallel, one serial, one USB, one TCP/IP printer port available
- One serial, one TCP/IP automation port available
- One USB, one TCP/IP console port available
- Non-volatile RAM for programming and event buffer
- Optional support for 512 IP Communicators
- Rack mount in standard 19-inch rack with the SG-SII-RMK
- 128 Bit AES encryption over IP
- Menu-driven, 40-character, 2-line LCD display with blue backlighting provides instruction when in manual mode
- 4 buttons for manual programming and acknowledgement of alarm signals when in manual mode
- Universal power supply compatible with 110/220 50 Hz/60 Hz
- Onboard flash memory and DSP for future software upgrades and enhancements



Approval Listings: FCC/IC, UL/ULC, European CE Directives (EMC, R&TTE, LVD)

## SG-SYSTEM II Single-Line IP Receiver

- Value-priced remote monitoring solution ideal for lower-volume applications
- Supports up to 512 supervised and up to 1,536 IP communicator accounts (TL150, TL250, TL300, TL260, TL265, TL260GS, TL265GS, GS3055-IGW, GS3060, GS2060, GS2065)
- Additional 1,536 IP communicator accounts available with license key upgrade
- Optional update to 3,072 IP accounts with licence key update
- Rack mount in standard 19-inch rack with the SG-SII-RMK
- TCP/IP, USB, serial outputs to automation software
- 128-bit AES encryption
- Works over local LAN/WAN network as well as the Internet
- Polling and hardware substitution protection
- Compatible with 10/100BaseT networks
- Fully programmable via SG-Systems Console software
- Menu-driven, 40-character, 2-line LCD display with blue backlighting provides instruction when in manual mode
- 4 buttons for manual programming and acknowledgement of alarm signals when in manual mode
- Universal power supply compatible with 110/220 50 Hz/60 Hz
- Onboard flash memory and DSP for future software upgrades and enhancements



Approval Listings: FCC/IC, UL/ULC, European CE Directives (EMC, LVD)

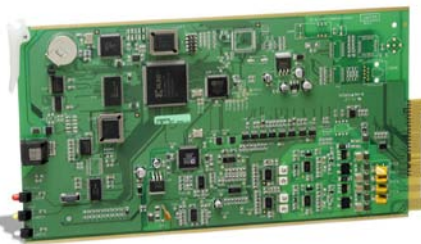
# Monitoring Station Receivers & Line Card Modules



## SG-SYSTEM III Virtual Receiver

- Up to 24 line cards per System III receiver
- Fully “hot-swappable” modules
- Fully programmable via SG-System III Console software
- Eliminates fixed-line hunt groups
- Integrated scheduled receiver line card testing
- Blocks unwanted communications
- Requires less physical space
- Upgradeable flash memory
- Automation output over TCP/IP or RS-232
- CE approved

Approval Listings: FCC/IC, UL/ULC, European CE Directives (EMC, R&TTE, LVD)



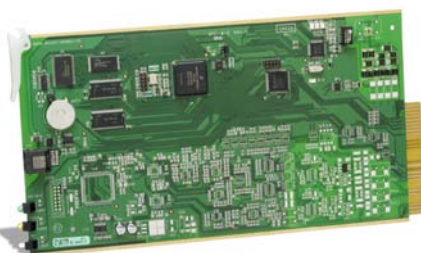
## SG-DRL3STD POTS Line Card For SYSTEM III

- Maximizes use of all line cards (SG-DRL3STD)
- Patented ANI and DNIS reception
- Patented Caller ID
- Patented Automatic Handshake Selection (AHS)
- Reduces phone charges
- Advanced 2-way audio integration
- CE approved

## SG-DRL3-2L

- Same functionality as SG-DRL3STD but with 2 physical lines for additional density

Approval Listings: FCC/IC, UL/ULC, CE



## SG-DRL3-IP Network Line Card For SYSTEM III

- Each line card supports up to 512 supervised and up to 1,536 total IP communicator accounts (TL150, TL250, TL260, TL300, TL260GS, TL265GS, GS3055-IGW, GS3060, GS2060, GS2065)
- Instant, always-on IP communication
- Works over local LAN/WAN network as well as the Internet
- 128-bit AES encryption
- Polling and hardware substitution protection
- Compatible with 10/100BaseT networks
- High-security network monitoring
- UL standard & encrypted line security
- CE approved

Approval Listings: FCC/IC, UL/ULC, CE



## DLS IV Downloading Software

DLS IV is built with tomorrow in mind. It runs on Microsoft's powerful .NET Framework 3.5 and SQL Server Express 2005 database engine. If you do not currently have these necessary components installed, the DLS IV installer will automatically download the latest version directly from Microsoft.com for you, and install them without any unnecessary interaction from you, the user.

The installation process begins with the DLS IV Updater. This updater will manage the rest of the installation process for you, and will provide updates in the future as DSC rolls out additional driver packs and feature updates.

- Logical grouping of options
- Additional modem support
- Multiple communication paths available (PSTN, GPRS, and TCP/IP)
- Supports the ALEXOR suite of products
- Supports the PowerSeries 9045
- Support for the PC1616, PC1832, PC1864 version 4.1 and higher
- Live updates automatically notify user that new panels or modules have been released

With logical grouping of options, wizards, and templates DLS has never been easier to navigate and use.

**DLS IV will require the following applications to be installed (automatically installed by autoupdater):**

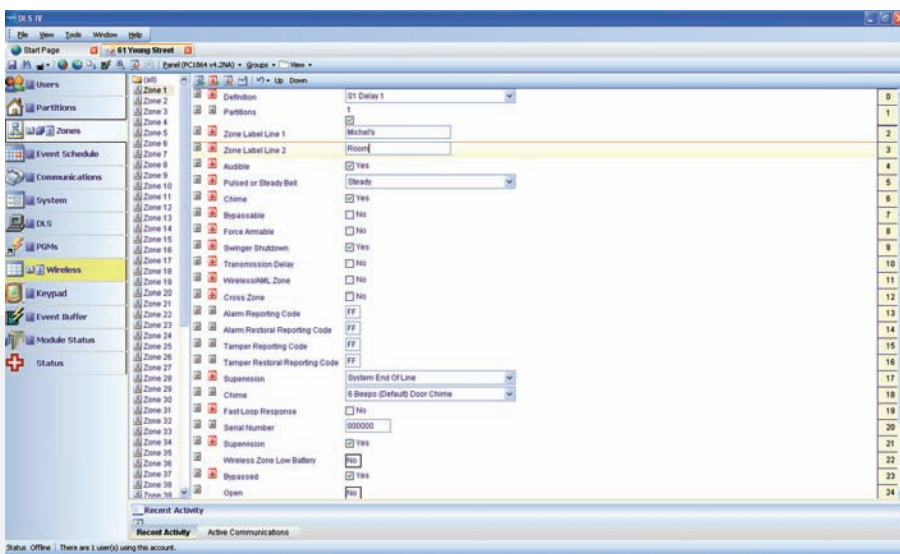
- 1) .NET Framework 3.5
- 2) SQL Server Express 2005
- 3) Visual C++ Runtime components

**Available accessories:**

**PCLINK-SCW** Direct-connect cable with serial DB-9 connector

**MD-12** Serial modem for remote panel communications

*NOTE: DLS IV is required for GPRS downloading.*





# DLS2002 Downloading Software

## DLS2002 Downloading Software

DLS2002 downloading software by DSC is much more than just a software package for remotely programming control panels. It's also a great diagnostic tool, and includes features such as auto-detect panel type and version, upgrade wizard, and error checking. DLS2002 will help streamline installations, reduce programming time and decrease service calls. It gives you the ability to make changes to a system remotely in minutes, without having to visit the site. DLS2002 supports all current product software versions and will take your installation and service capabilities to the next level.

## DLS2002SA System Administrator Software

The DLS2002SA System Administrator software is a perfect solution for large or multi-location business applications using the PC1864 or MAXSYS control panel. The software is simple to use and gives users the ability to view and change codes, access cards and schedules, as well as view system status, arm/disarm partitions, and view, sort and print the event buffer. The software can be found in the Products area of the DSC website under the password-protected software section.

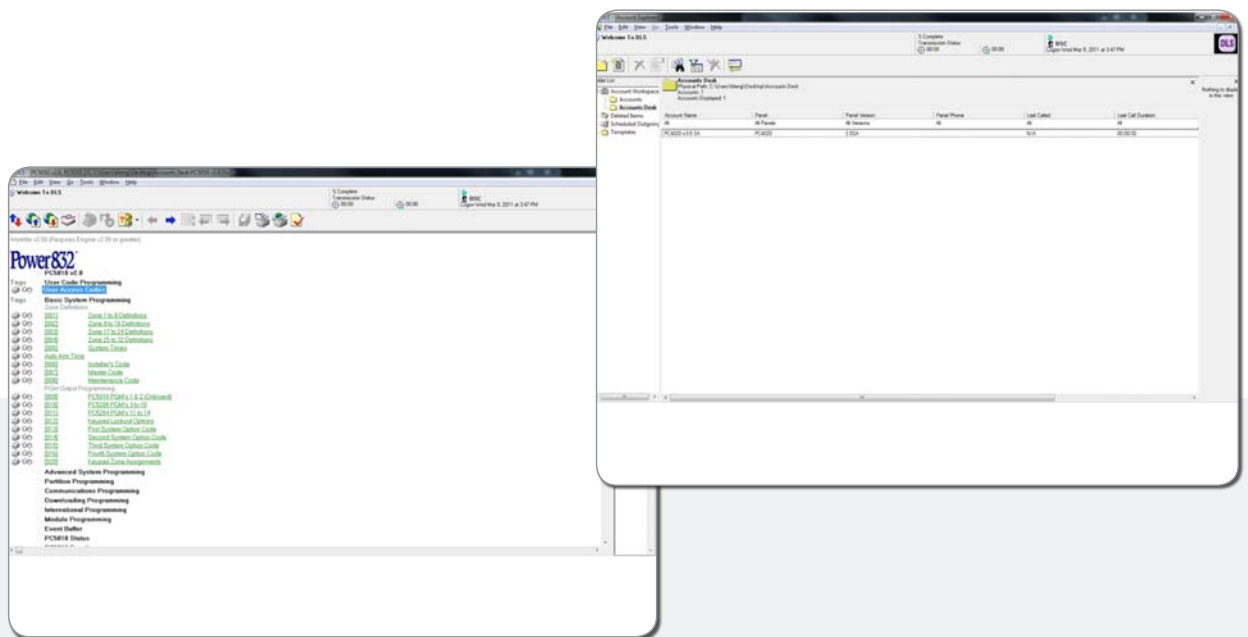
### Features:

- Intuitive user interface
- Automatic panel and module version detection
- Automatic panel version correction
- Automatic module version correction
- Upgrade wizard
- Error checking
- Batch programming
- System installation graphic
- Supports v4.2 and previous panels

### Available accessories:

**PCLINK-SCW** Direct-connect cable with serial DB-9 connector

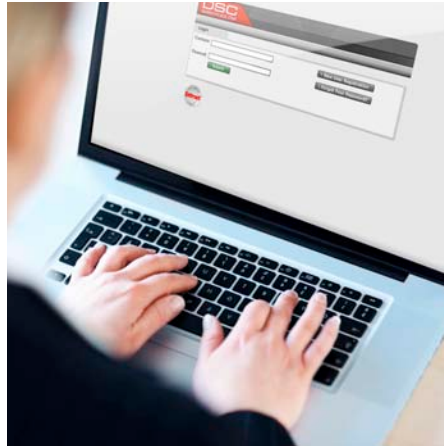
**MD-12** Serial modem for remote panel communications





## DSC Services & Support

DSC understands that security dealers everywhere need more than just great products, they deserve exceptional service and support as well. That is why we have committed resources to ensure we're in a position to help our customers as needed.



### DSC Customer Service and Support

A dedicated team of Technical Support, Customer Service and Sales Support Representatives are available to provide security professionals with valuable expertise and in-depth product knowledge. The Customer Service and Support Center offers extended hours of services and access to all departments within DSC with multilingual support.

For any inquiries, general product information or the location of the nearest DSC distributor, please call +1.905.760.3000 or email us at [info@dsc.com](mailto:info@dsc.com).

For technical support issues, please call +1.647.288.2629 or email [tech@dsc.com](mailto:tech@dsc.com).

For sales support issues, please email [emeasales@tycoint.com](mailto:emeasales@tycoint.com).

### DSC marketplace.com

The DSC marketplace.com is your primary method for ordering product-specific literature, associated marketing support materials and promotional items. To access this great service, please visit [www.dscmarketplace.com](http://www.dscmarketplace.com) and complete the short registration form. Your account will be activated within 48 hours allowing you to start browsing the site at your convenience. To ensure proper materials are being ordered, you can view thumbnail pictures as well as download PDF files of all items. For more information please visit [www.dscmarketplace.com](http://www.dscmarketplace.com).

### [www.dsc.com](http://www.dsc.com)

The DSC website is an intuitive, easy-to-navigate resource that provides security professionals with access to a wealth of product-specific information. Password-protected areas are tailored specifically for security dealers and offer the latest news on DSC products, corresponding events and launches, the latest technical support materials and diagnostic tools, and helpful industry and association links. Visit [www.dsc.com](http://www.dsc.com) to learn more.

Downloadable PDF versions of all DSC sales and specification sheets, images, end-user manuals, architect and engineer specifications, plus the complete DSC product catalog can be found on the website. Visit [www.dsc.com](http://www.dsc.com) to learn more.

### webEntry™ Controller

The webEntry™ controller is a low cost 'entry level' access control system that is at the forefront of today's IP-based security technologies.



- Self contained access control system
- Controller managed via web browser on any networked PC - no additional control software required
- Supports four multidrop networks of card readers (64 doors total) using RS485 cabling
- Full operational battery backup available in the event of power failure
- 128 MB compact flash for database with expansion available
- Storage capacity for up to 10,000 card records
- Database is retained even in the event of battery backup failure

Approval Listings: European CE Directives (EMC), UL/ULC, FCC/IC

### sDCM 300 Two Door Intelligent Serial Controller

The sDCM 300 (Door Control Module) is an intelligent, two-door controller designed to interface ioProx Proximity readers to the webEntry access control system.



- Support for two doors
- RS485 host connection
- Structured database allows storage of large amounts of cardholder records for off-line card validation
- Reader communications via standard Wiegand or Mag Stripe interfaces
- Eight Supervised inputs (four available per door)
- Two Relays (normally opened or normally closed)
- Self resetting fuses – saves maintenance time
- Onboard LED - provides visual status
- Dedicated Tamper input

Approval Listings: European CE Directives (EMC), UL/ULC, FCC/IC

### ioProx Proximity Readers and Cards

Choose from four ioProx readers that easily meet the demands of any application. The readers are attractive, compact, weatherized, and vandal-resistant, making them suitable for installation in a variety of environments.



- eXtended Secure Format (XSF)
- Weatherproof design for indoor and outdoor applications
- Integrated piezo buzzer & bicolor LED
- Quick connect terminal blocks for easy wiring
- Long-life passive card for unlimited number of reads
- Four card models to meet any application

Approval Listings: European CE Directives (EMC), UL/ULC, FCC/IC



# Introducing DSC webEntry... Security System via your web browser

Stay in control – Wherever you are!

webEntry™ takes advantage of web based technologies to enable customers to control and monitor their property no matter where they are – all via the web.

- Access control & integrated intruder alarm management
- Low cost security systems
- Supports up to 64 doors
- Easy to install – webEntry controller combines a web server interface and access control functionalities into one unit
- Arm/Disarm DSC PowerSeries intruder control panels using ID card
- Easy to manage - Plug & Play
- No software or dedicated PC required
- ID Badging, Graphical Alarms Display
- Optional Time & Attendance reporting

**DSC**

*A Tyco International Company*



# DSC

*A Tyco International Company*

For more information on the products featured here  
or on any other DSC products please call:

**+ 1 905.760.3000**

**E-mail: [info@dsc.com](mailto:info@dsc.com)**

or contact your DSC Account Representative.  
Please visit us at [www.dsc.com](http://www.dsc.com)

© 2011 Tyco International Ltd. and its Respective Companies. All Rights Reserved.  
The trademarks, logos, and service marks displayed on this document are registered in the United States (or other countries). Any misuse of the trademarks is strictly prohibited and Tyco International Ltd. will aggressively enforce its intellectual property rights to the fullest extent of the law, including pursuit of criminal prosecution wherever necessary. All trademarks not owned by Tyco International Ltd. are the property of their respective owners, and are used with permission or allowed under applicable laws.  
Product offerings and specifications are subject to change without notice. Actual products may vary from photos. Not all products include all features. Availability varies by region; contact your sales representative.  
03-2011

PN 30001233

